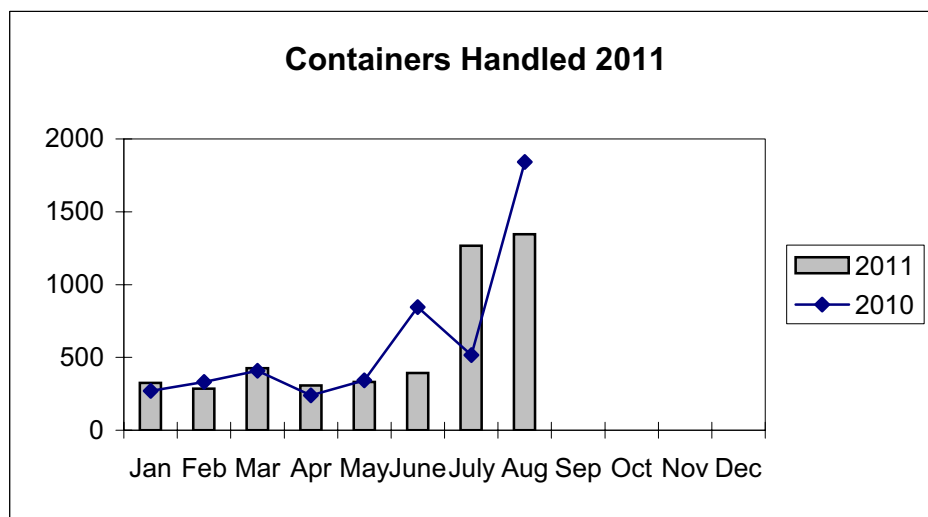
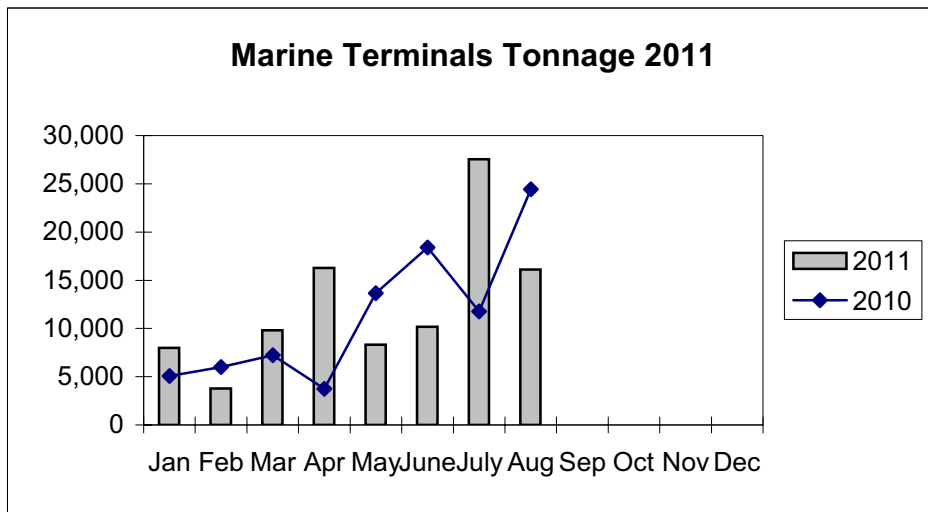
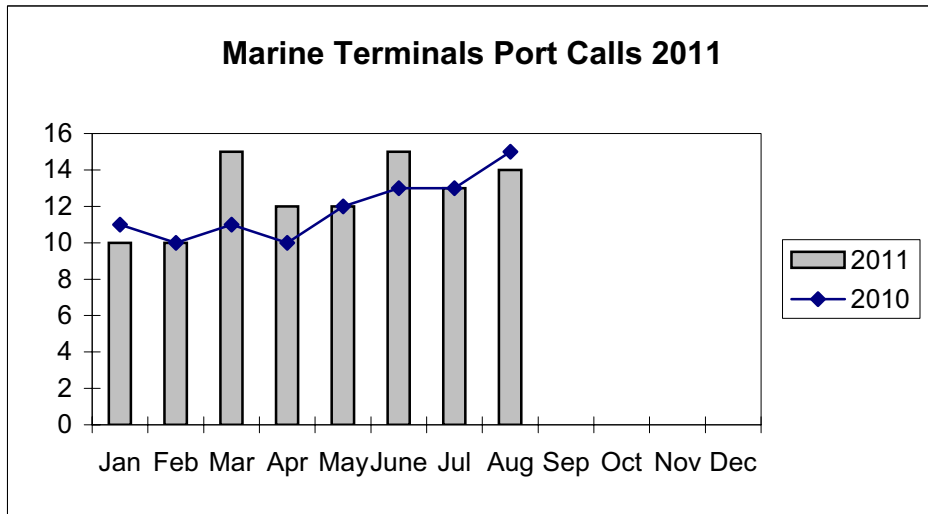


**Port of Everett  
Marine Terminals Statistics Through August 2011**



**Port of Everett  
Marine Terminals Statistics Through August 2011**

<b>Port Calls</b>		<b>2011</b>	<b>2010</b>
Port calls YTD		101	95
	ships	67	61
	barges	34	34
Port calls this month	Aug	14	15
	ship	10	11
	barge	4	4
Port calls this month	July	13	13
	ship	9	8
	barge	4	5
<b>Tonnage</b>		<b>2011</b>	<b>2010</b>
Short Tons YTD		100,000	90,275
	In (general)	24,872	28,116
	Out	71,078	62,159
	Out (logs)	4,050	-
Short tons This Month	Aug	16,094	24,425
	In (general)	4,656	8,832
	Out	11,438	15,593
	Out (logs)	-	-
Short tons Last Month	July	27,557	11,763
	In (general)	2,653	3,868
	Out	24,904	7,895
	Out (logs)	-	-
<b>Container Statistics</b>		<b>2011</b>	<b>2010</b>
Number of Units YTD		4,679	4,795
	In	2,051	2,261
	Out	2,628	2,534
Number of Units This Month	Aug	1,345	1,842
	In	794	1,099
	Out	551	743
Number of Units Last Month	July	1,266	517
	In	213	147
	Out	1,053	370