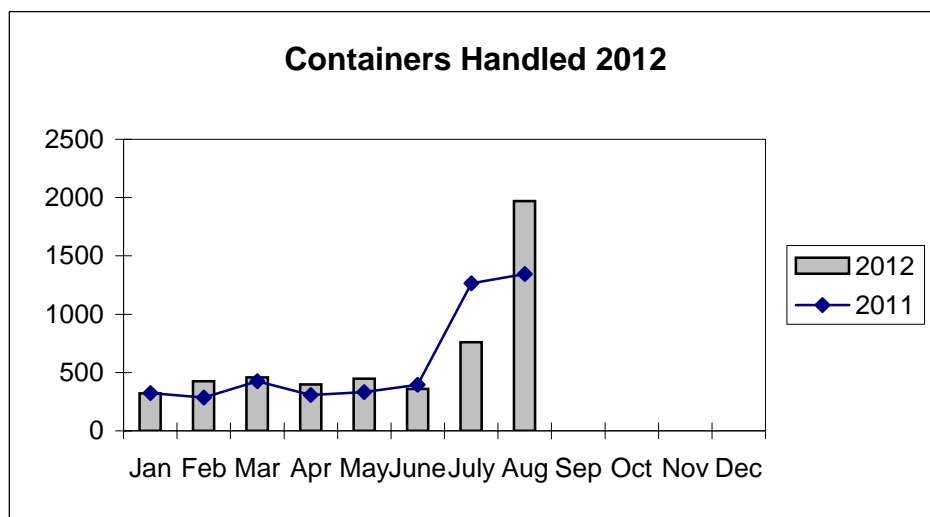
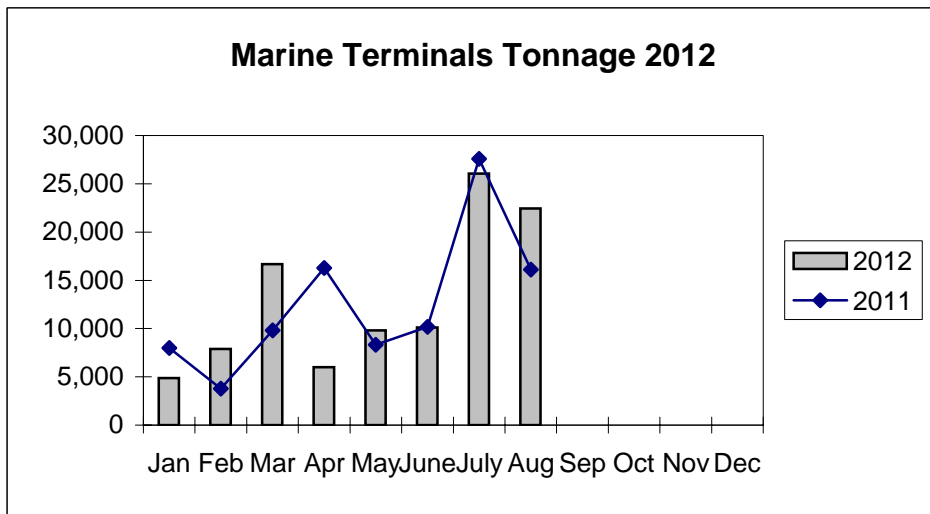
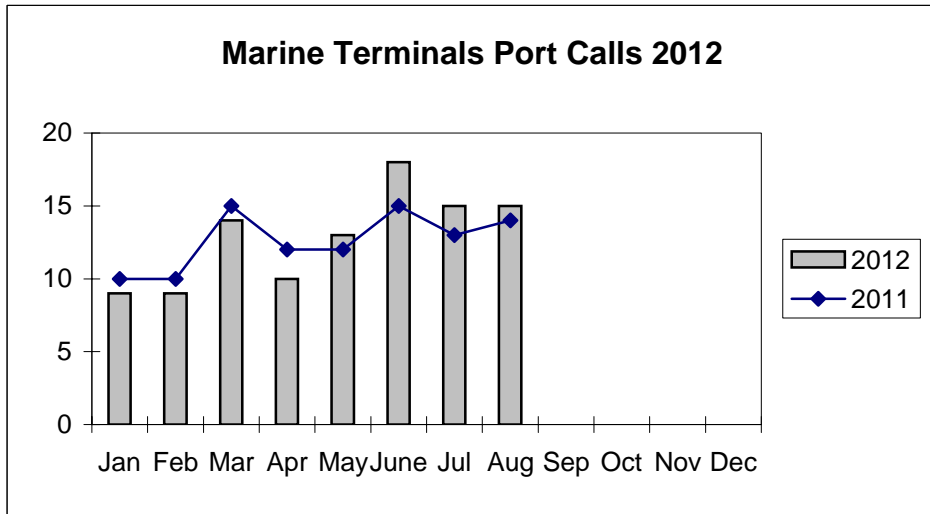


**Port of Everett
Marine Terminals Statistics Through August 2012**



**Port of Everett
Marine Terminals Statistics Through August 2012**

Port Calls		2012	2011
Port calls YTD		103	101
	ships	61	67
	barges	42	34
Port calls this month	Aug	15	14
	ship	10	10
	barge	5	4
Port calls this month	July	15	13
	ship	8	9
	barge	7	4
Tonnage		2012	2011
Short Tons YTD		103,864	100,000
	In (general)	40,667	24,872
	Out	44,423	71,078
	Out (logs)	18,774	4,050
Short tons This Month	Aug	22,450	16,094
	In (general)	6,063	4,656
	Out	16,387	11,438
	Out (logs)	-	-
Short tons Last Month	July	26,071	27,557
	In (general)	5,218	2,653
	Out	11,264	24,904
	Out (logs)	9,589	-
Container Statistics		2012	2011
Number of Units YTD		5,138	4,679
	In	3,328	2,051
	Out	1,810	2,628
Number of Units This Month	Aug	1,971	1,345
	In	1,243	794
	Out	728	551
Number of Units Last Month	July	759	1,266
	In	325	213
	Out	434	1,053

**Port of Everett
Marine Terminals Statistics Through August 2012**

