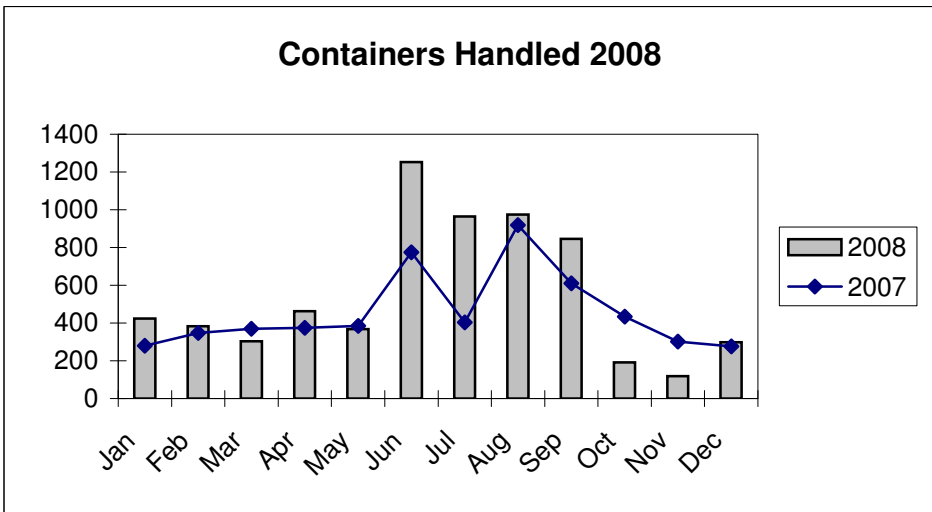
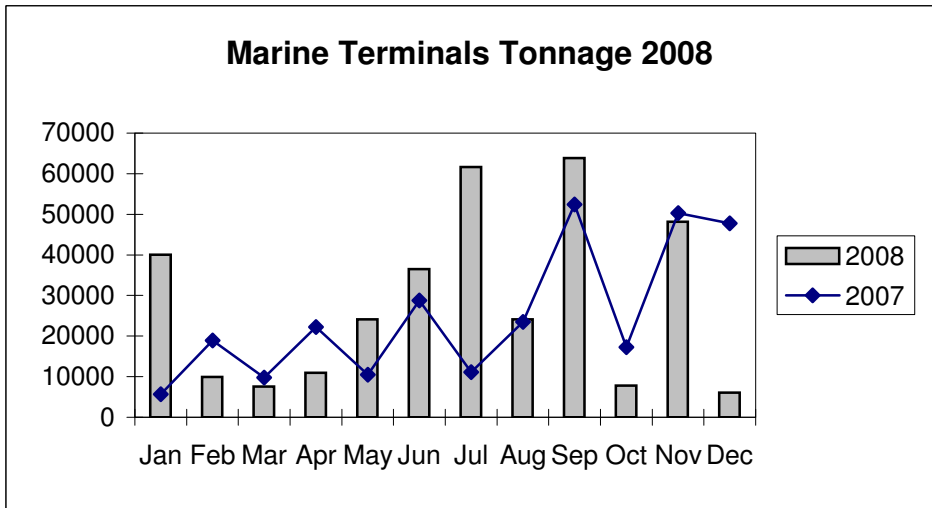
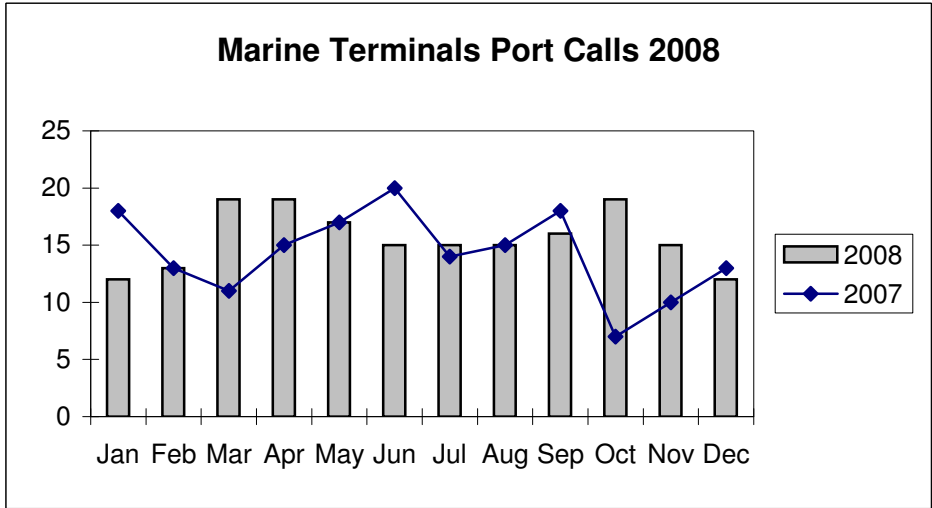


**Port of Everett
Marine Terminals Statistics Through December 2008**



**Port of Everett
Marine Terminals Statistics Through December 2008**

Port Calls			2008	2007
Port calls YTD			171	187
	ships		119	124
	barges		52	63
Port calls this month		Dec	13	12
	ship		8	8
	barge		5	4
Port calls last month		Nov	10	15
	ship		6	10
	barge		4	5
Tonnage			2008	2007
Short Tons YTD			341,515	298,824
	In (general)		61,244	106,801
	In (cement)		185,488	124,598
	Out		94,783	67,425
Short tons this month		Dec	6,073	47,748
	In (general)		3,852	2,343
	In (cement)		-	42,059
	Out		2,221	3,346
Short tons last month		Nov	48,159	50,257
	In (general)		3,042	5,839
	In (cement)		42,063	42,034
	Out		3,054	2,384
Container Statistics			2008	2007
Number of Units YTD			6,595	5,550
	In		2,485	2,178
	Out		4,110	3,372
Number of Units This Month		Dec	299	276
	In		172	136
	Out		127	140
Number of Units Last Month		Nov	118	302
	In		-	168
	Out		118	134