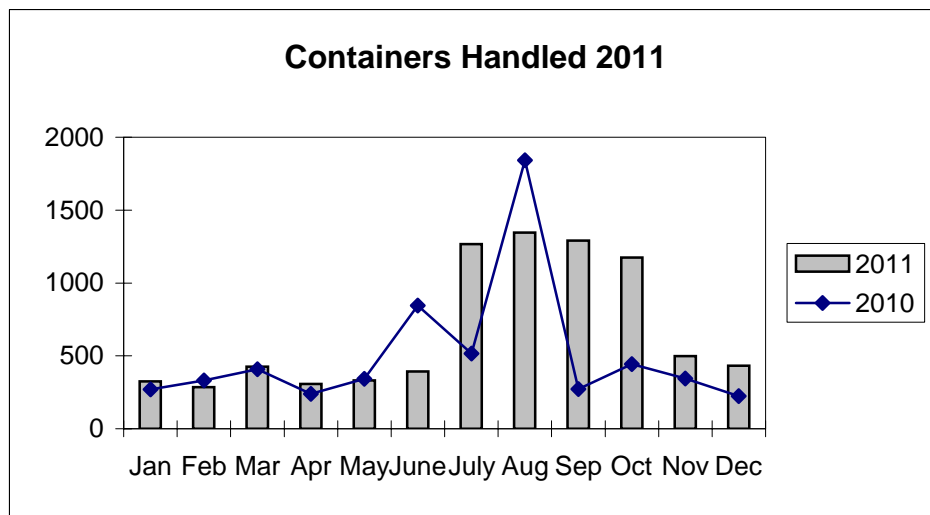
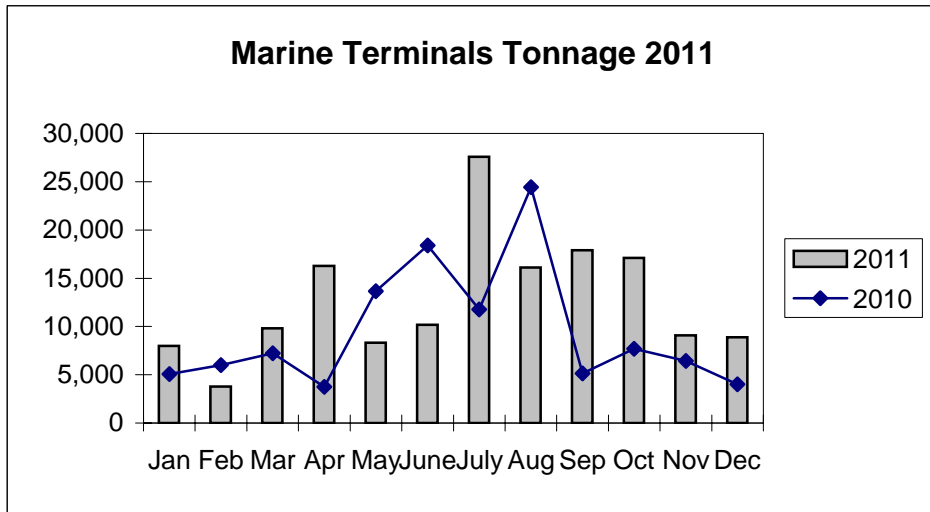
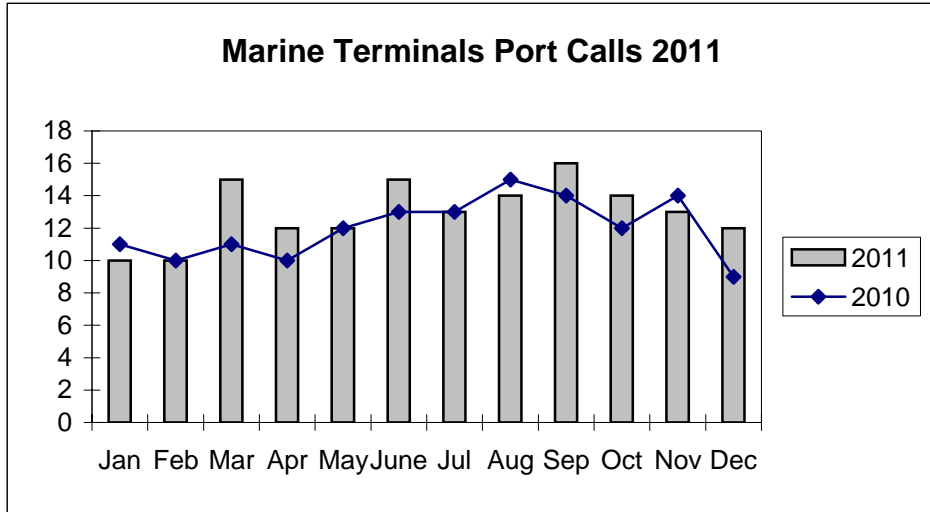


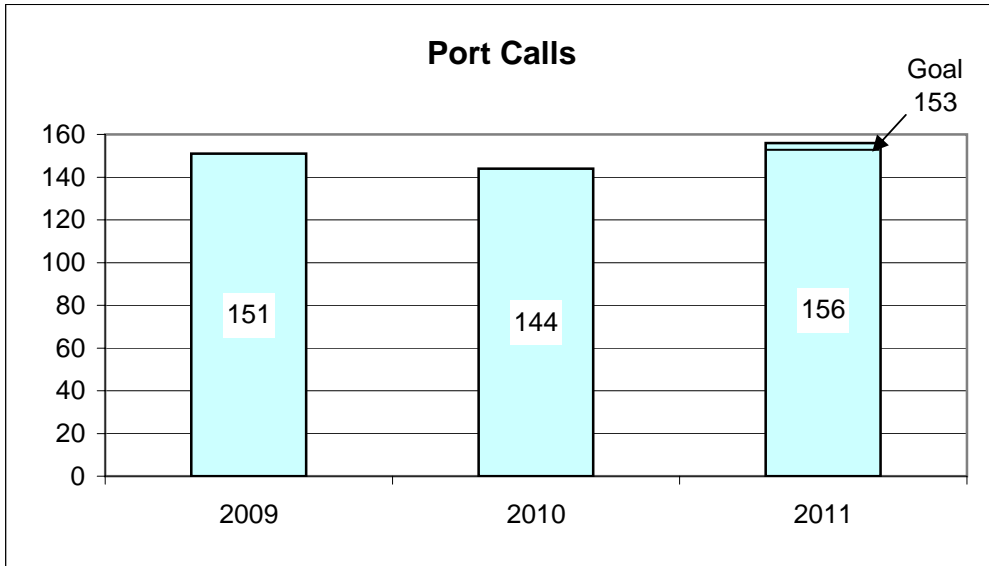
**Port of Everett
Marine Terminals Statistics Through December 2011**



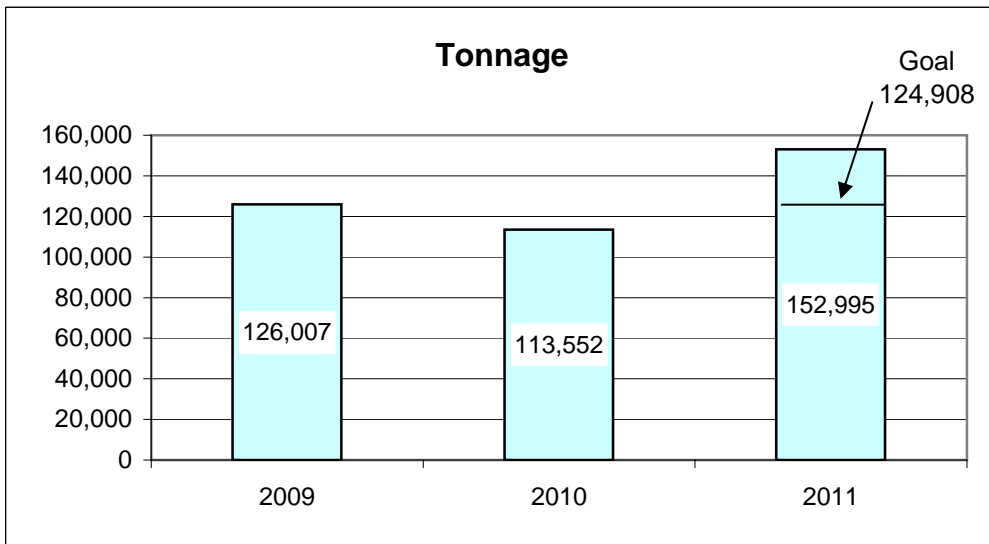
Port of Everett
Marine Terminals Statistics Through December 2011

Port Calls			2011	2010
Port calls YTD			156	144
	ships		100	94
	barges		56	50
Port calls this month		Dec	12	9
	ship		8	6
	barge		4	3
Port calls last month		Nov	13	14
	ship		8	8
	barge		5	6
Tonnage			2011	2010
Short Tons YTD			152,995	113,554
	In (general)		43,045	38,083
	Out		105,900	75,471
	Out (logs)		4,050	-
Short tons this month		Dec	8,895	4,015
	In (general)		4,347	1,964
	Out		4,548	2,051
	Out (logs)		-	-
Short tons last month		Nov	9,088	6,442
	In (general)		4,515	2,861
	Out		4,573	3,581
	Out (logs)		-	-
Container Statistics			2011	2010
Number of Units YTD			8,077	6,081
	In		3,958	2,908
	Out		4,119	3,173
Number of Units This Month		Dec	433	224
	In		266	148
	Out		167	76
Number of Units Last Month		Nov	499	345
	In		336	184
	Out		163	161

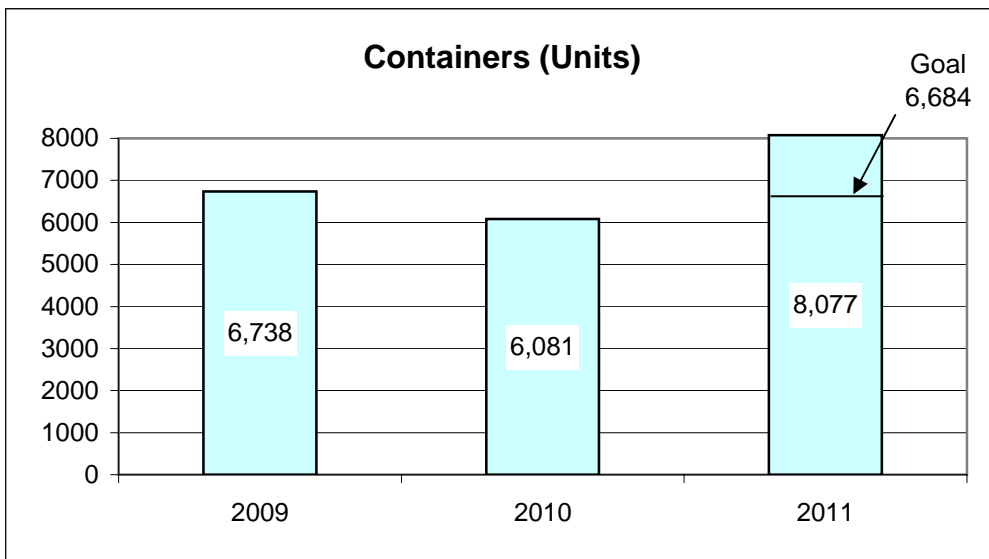
**Port of Everett
Marine Terminals Statistics Through December 2011**



102%



122%



121%