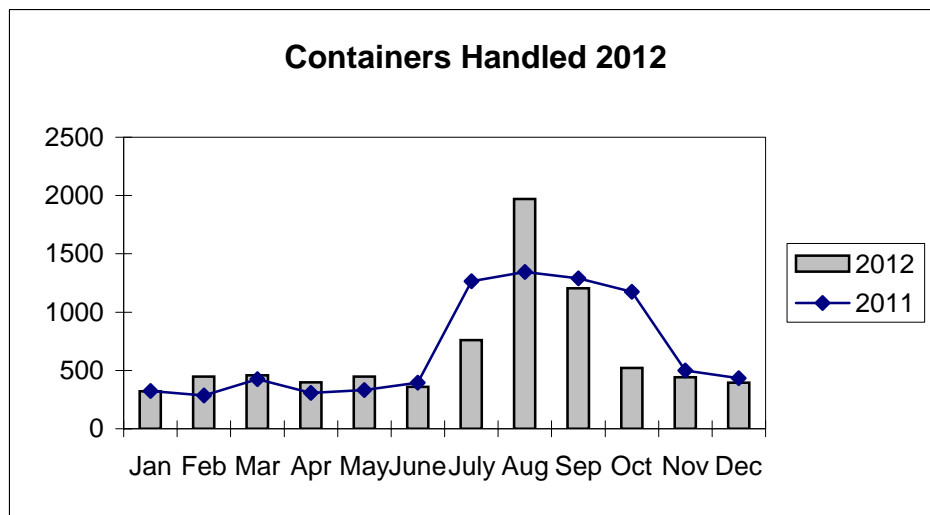
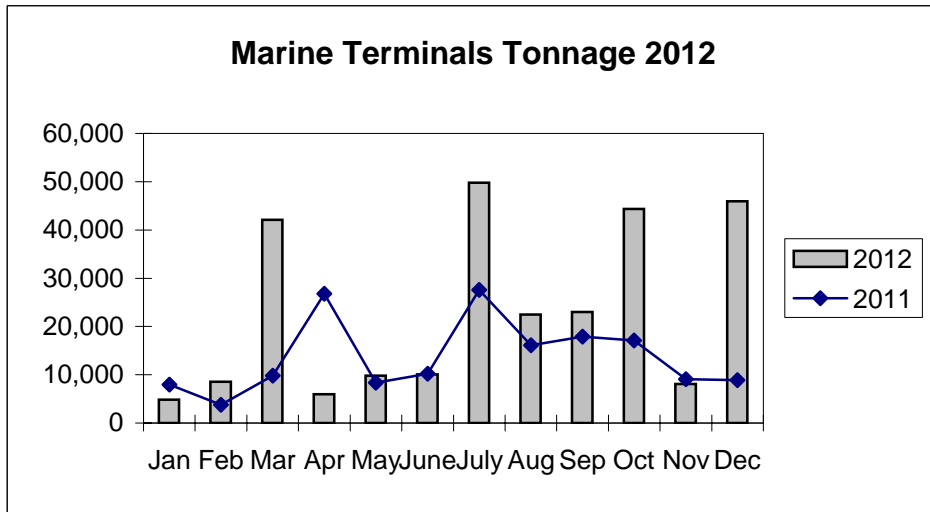
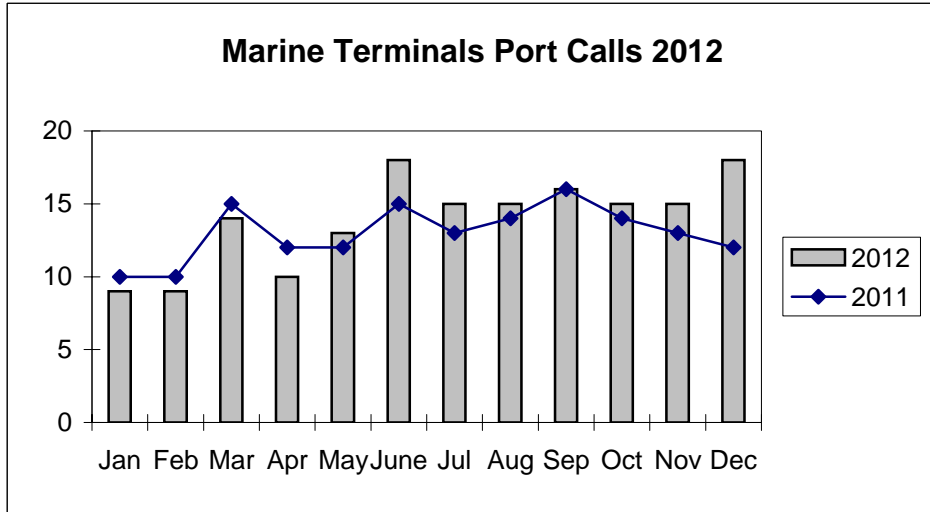


**Port of Everett  
Marine Terminals Statistics Through December 2012**



**Port of Everett**  
**Marine Terminals Statistics Through December 2012**

<b>Port Calls</b>			<b>2012</b>	<b>2011</b>
Port calls YTD			167	156
	ships		101	100
	barges		66	56
Port calls this month		Dec	18	12
	ship		12	8
	barge		6	4
Port calls last month		Nov	15	13
	ship		9	8
	barge		6	5
<b>Tonnage</b>			<b>2012</b>	<b>2011</b>
Short Tons YTD			275,083	163,480
	In (general)		80,792	43,045
	Out		66,573	105,900
	Out (logs)		127,718	14,535
Short tons this month		Dec	45,961	8,895
	In (general)		12,373	4,347
	Out		3,175	4,548
	Out (logs)		30,413	-
Short tons last month		Nov	8,118	9,088
	In (general)		5,091	4,515
	Out		3,027	4,573
	Out (logs)		-	-
<b>Container Statistics</b>			<b>2012</b>	<b>2011</b>
Number of Units YTD			7,725	8,077
	In		4,849	3,958
	Out		2,876	4,119
Number of Units This Month		Dec	396	433
	In		258	266
	Out		138	167
Number of Units Last Month		Nov	442	499
	In		335	336
	Out		107	163

**Port of Everett  
Marine Terminals Statistics Through December 2012**

