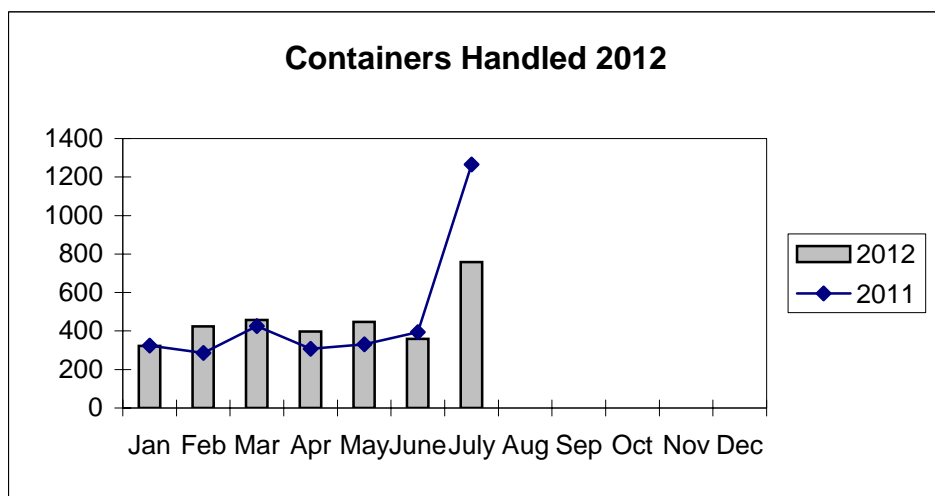
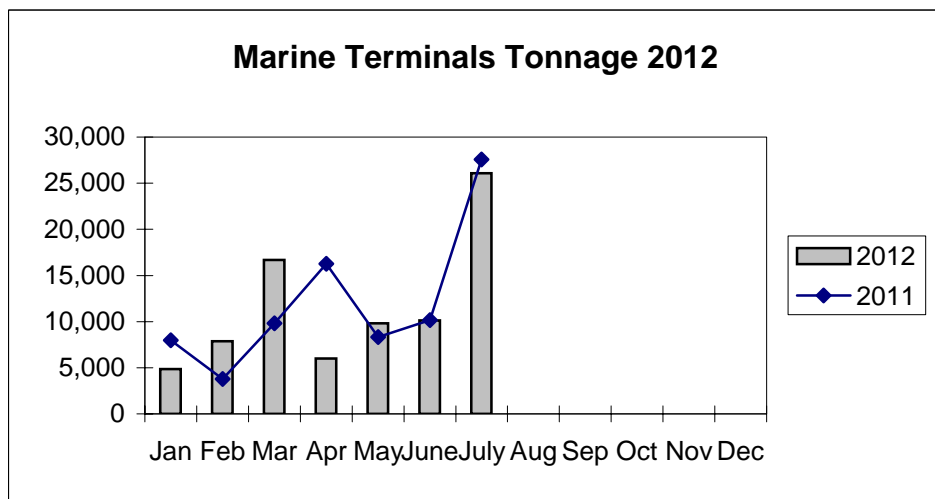
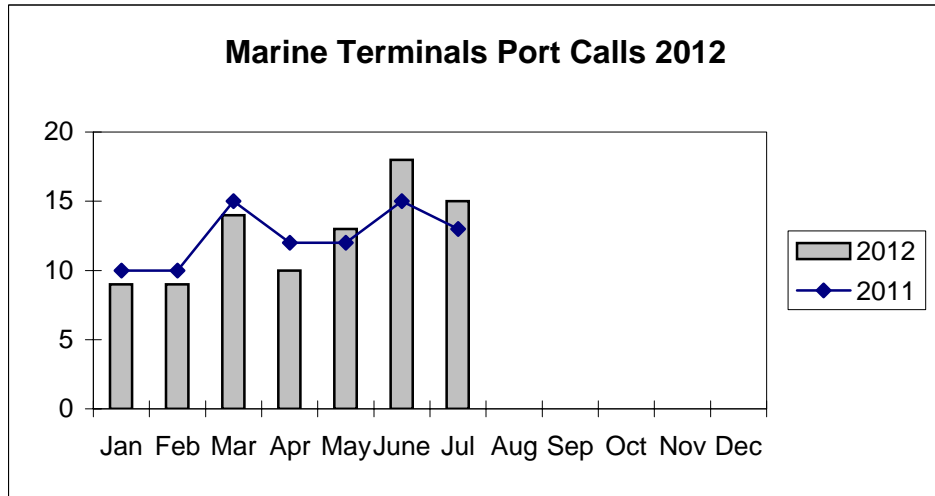


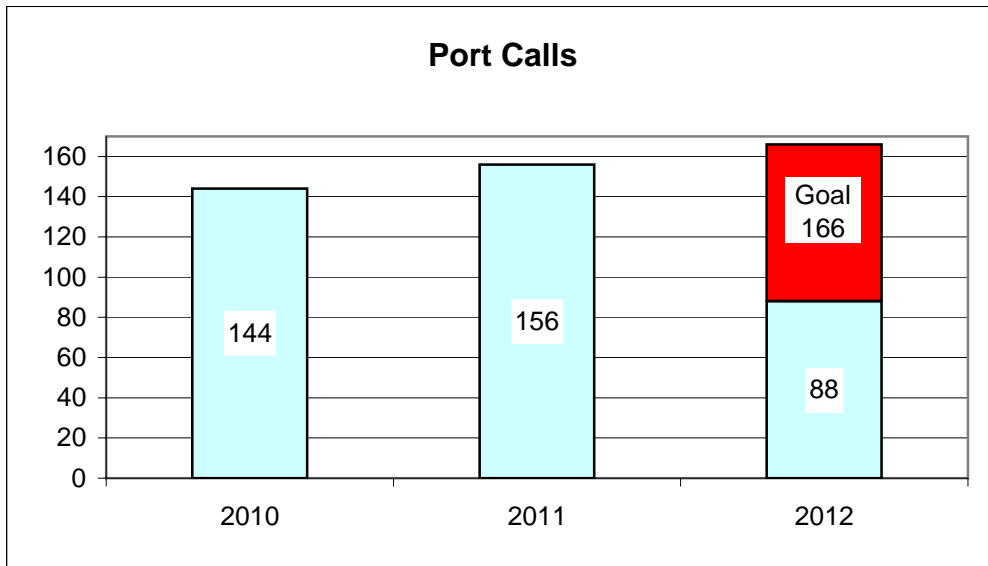
**Port of Everett  
Marine Terminals Statistics Through July 2012**



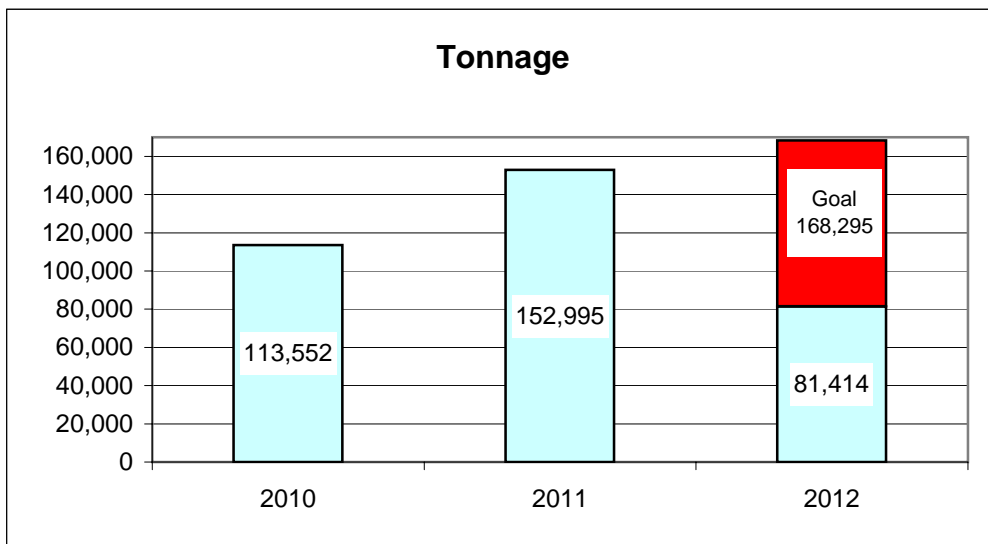
**Port of Everett  
Marine Terminals Statistics Through July 2012**

<b>Port Calls</b>		<b>2012</b>	<b>2011</b>
Port calls YTD		88	87
	ships	51	56
	barges	37	31
Port calls this month	July	15	13
	ship	8	9
	barge	7	4
Port calls last month	June	18	15
	ship	10	9
	barge	8	6
<b>Tonnage</b>		<b>2012</b>	<b>2011</b>
Short Tons YTD		81,414	83,907
	In (general)	34,604	20,216
	Out	28,036	59,641
	Out (logs)	18,774	4,050
Short tons This Month	July	26,071	27,569
	In (general)	5,218	2,665
	Out	11,264	24,904
	Out (logs)	9,589	-
Short tons Last Month	June	10,110	10,176
	In (general)	5,265	3,521
	Out	4,845	6,655
	Out (logs)	-	-
<b>Container Statistics</b>		<b>2012</b>	<b>2011</b>
Number of Units YTD		3,143	3,334
	In	2,061	1,257
	Out	1,082	2,077
Number of Units This Month	July	759	1,266
	In	325	213
	Out	434	1,053
Number of Units Last Month	June	359	394
	In	273	236
	Out	86	158

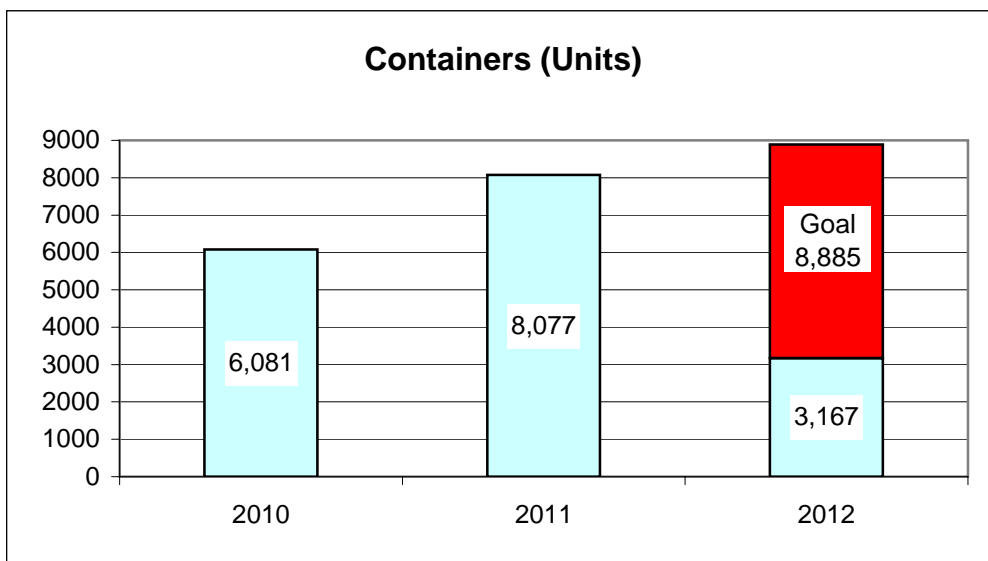
# Port of Everett Marine Terminals Statistics Through July 2012



53%



48%



36%