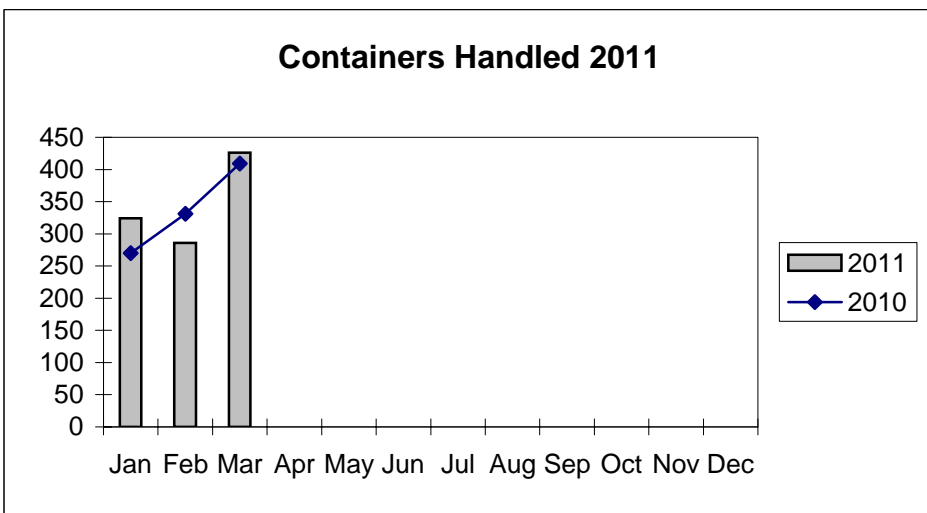
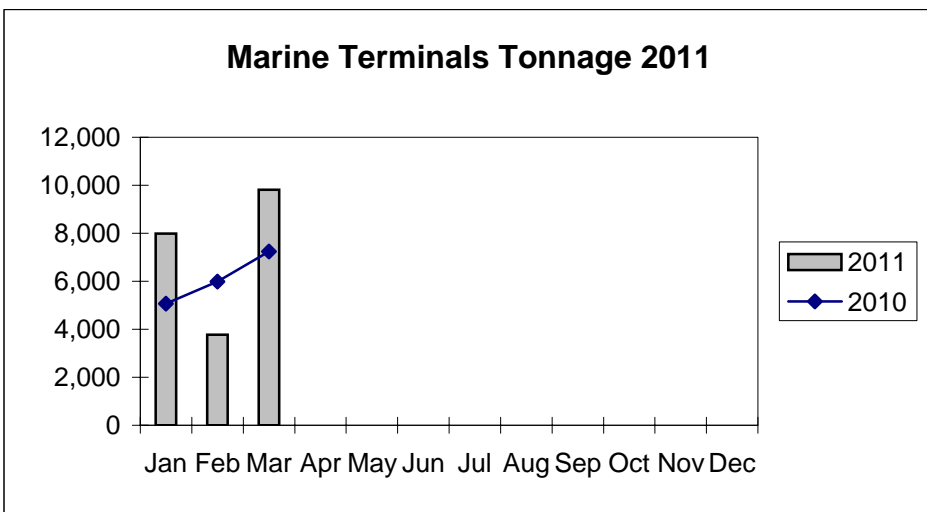
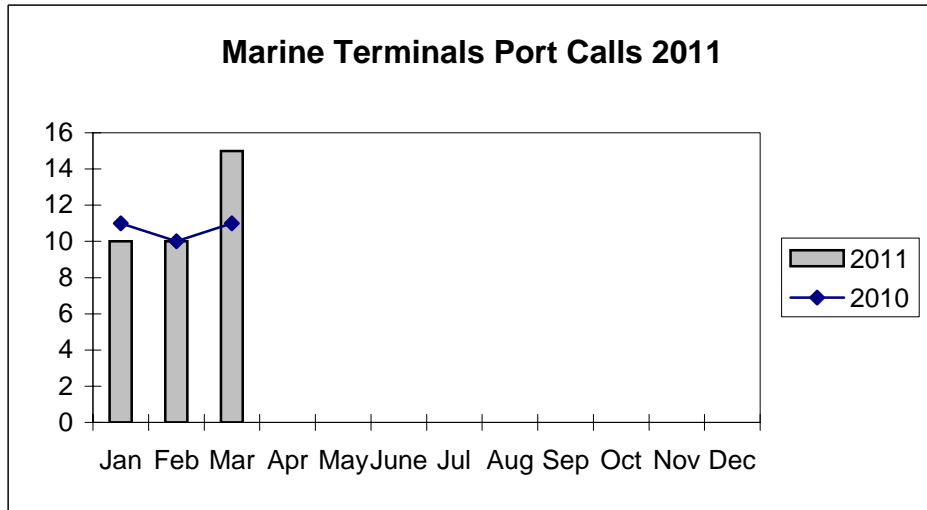


**Port of Everett  
Marine Terminals Tonnage Through March 2011**



**Port of Everett  
Marine Terminals Tonnage Through March 2011**

<b>Port Calls</b>			<b>2011</b>	<b>2010</b>
Port calls YTD			35	32
	ships		21	20
	barges		14	12
Port calls this month		Mar	15	11
	ship		10	7
	barge		5	4
Port calls last month		Feb	10	10
	ship		6	6
	barge		4	4
<b>Tonnage</b>			<b>2011</b>	<b>2010</b>
Short Tons YTD			21,572	18,294
	In (general)		5,980	8,847
	Out		15,592	9,447
Short tons This Month		Mar	9,816	7,235
	In (general)		2,732	2,805
	Out		7,084	4,430
Short tons Last Month		Feb	3,772	5,989
	In (general)		2,321	3,491
	Out		1,451	2,498
<b>Container Statistics</b>			<b>2011</b>	<b>2010</b>
Number of Units YTD			995	1,010
	In		410	556
	Out		585	454
Number of Units This Month		Mar	426	409
	In		197	219
	Out		229	190
Number of Units Last Month		Feb	286	331
	In		182	189
	Out		104	142