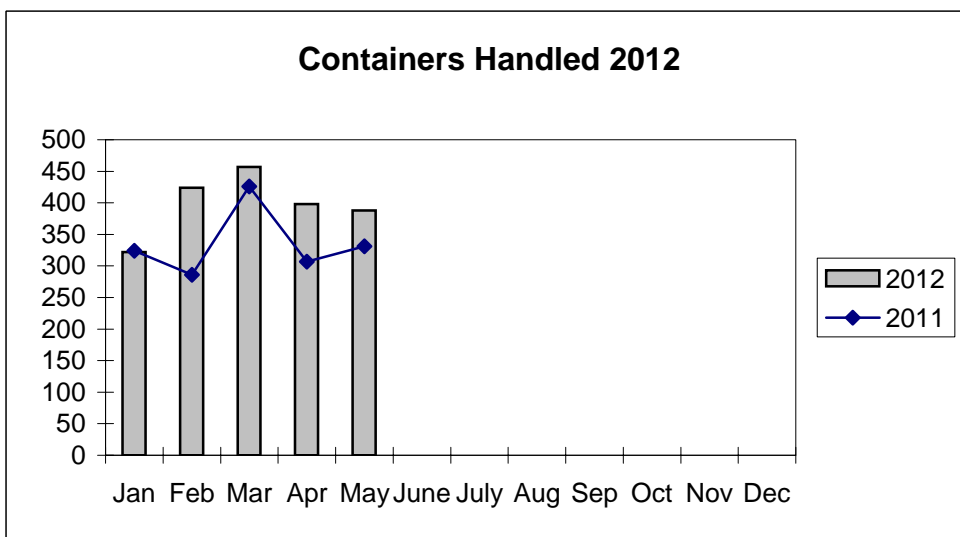
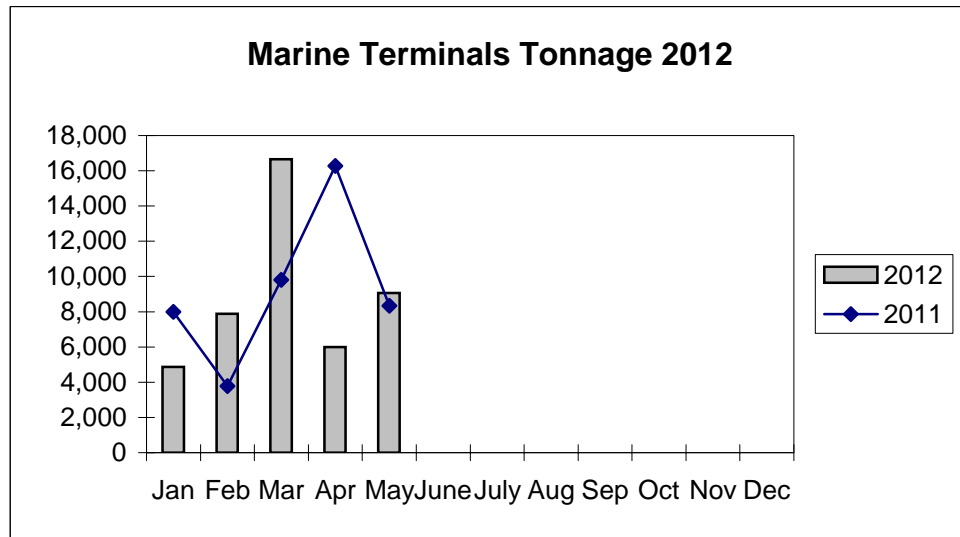
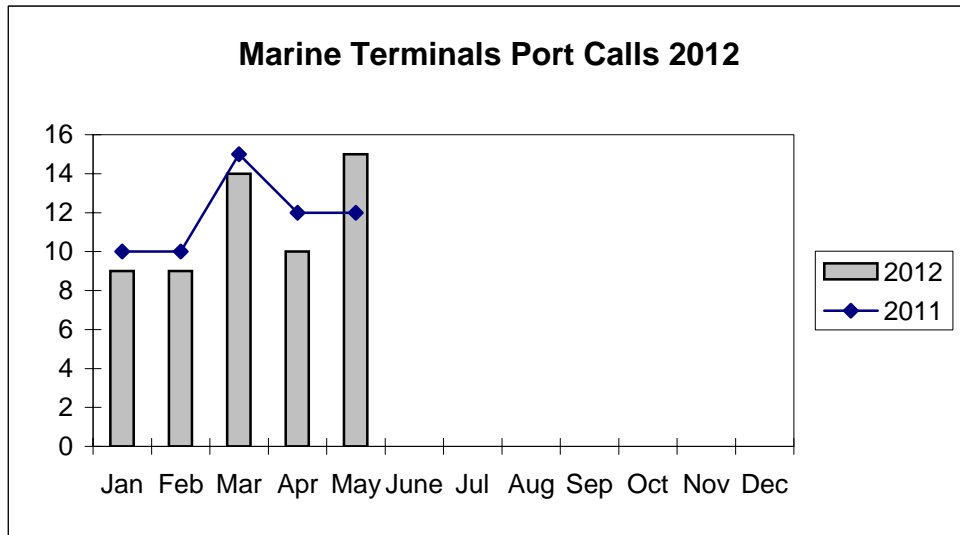


**Port of Everett
Marine Terminals Tonnage Through May 2012**



**Port of Everett
Marine Terminals Tonnage Through May 2012**

Port Calls		2012	2011
Port calls YTD		57	59
	ships	35	37
	barges	22	22
Port calls this month	May	15	12
	ship	10	8
	barge	5	4
Port calls last month	April	10	12
	ship	6	8
	barge	4	4
Tonnage		2012	2011
Short Tons YTD		44,468	46,173
	In (general)	23,369	14,041
	Out	11,914	28,082
	Out (logs)	9,185	4,050
Short tons This Month	May	9,056	8,332
	In (general)	6,345	3,242
	Out	2,711	5,090
	Out (logs)	-	-
Short tons Last Month	April	5,995	16,268
	In (general)	4,328	4,819
	Out	1,667	7,399
	Out (logs)	-	4,050
Container Statistics		2012	2011
Number of Units YTD		1,989	1,674
	In	1,427	808
	Out	562	866
Number of Units This Month	May	388	331
	In	294	168
	Out	94	163
Number of Units Last Month	April	398	307
	In	279	189
	Out	119	118

Port of Everett Marine Terminals Statistics Through May 2012

