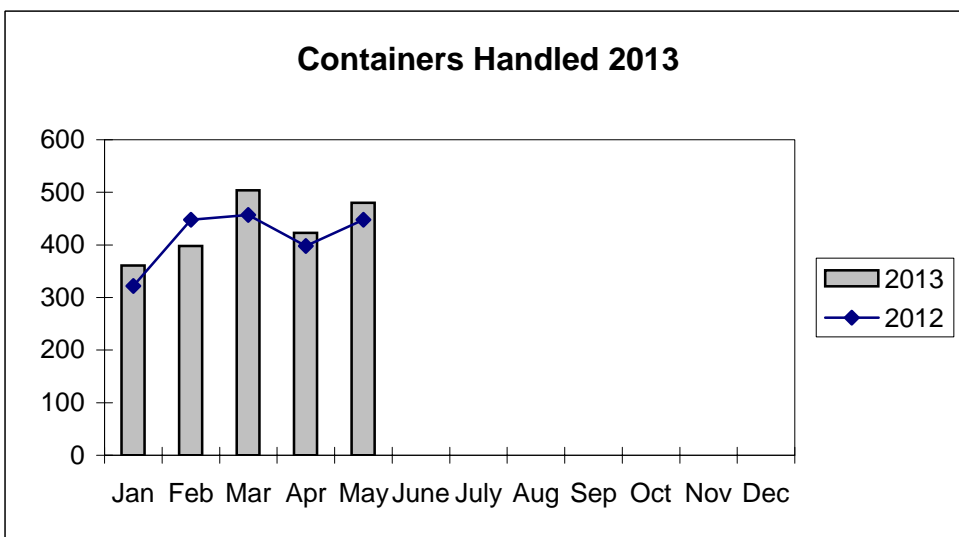
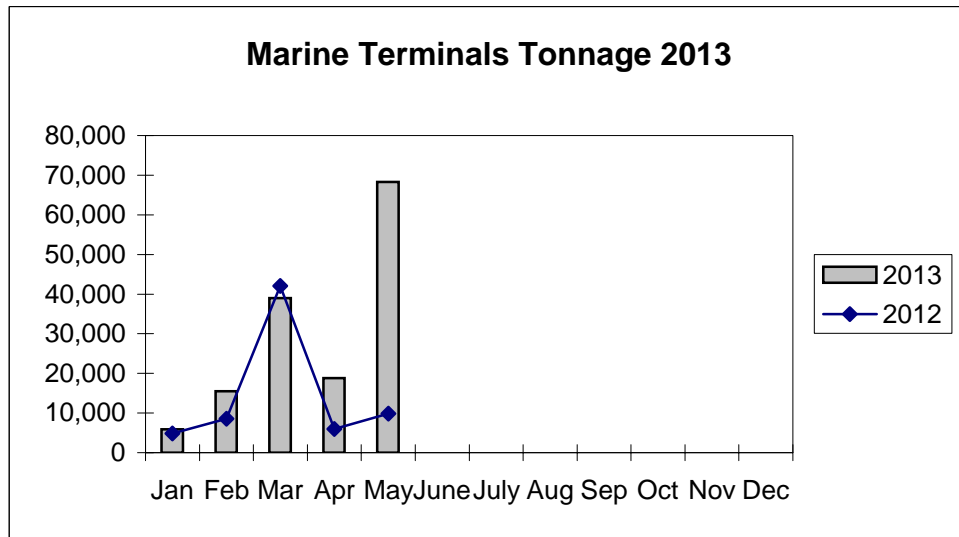
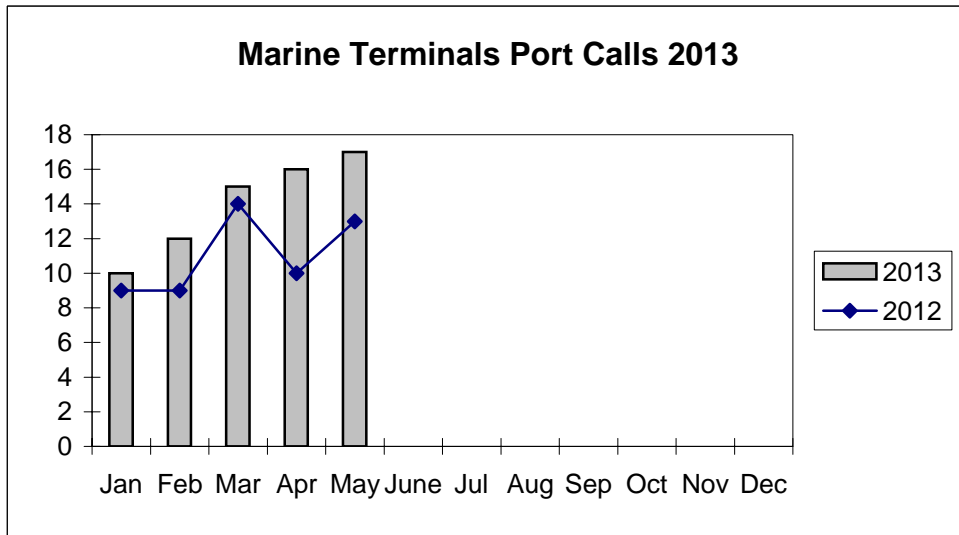


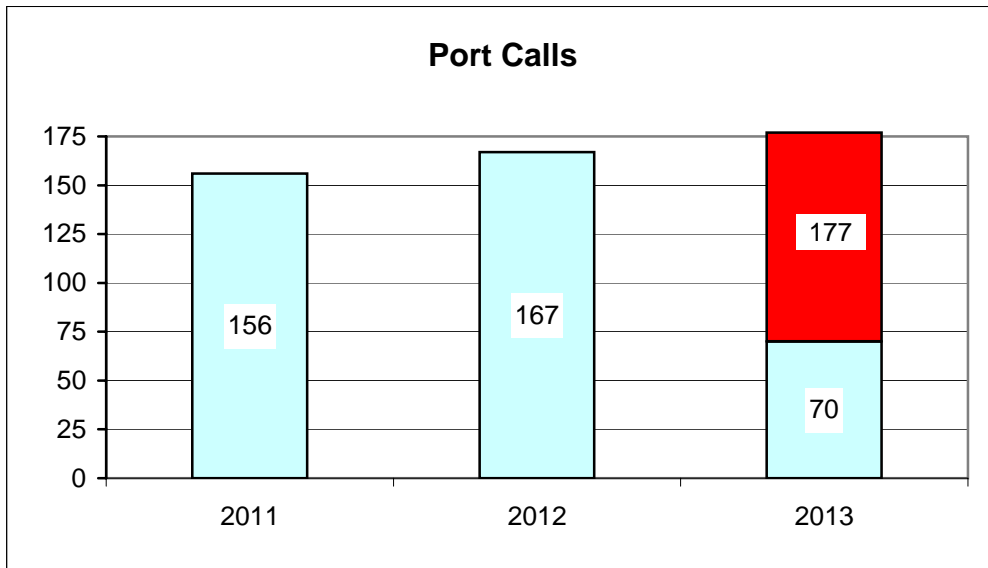
**Port of Everett
Marine Terminals Tonnage Through May 2013**



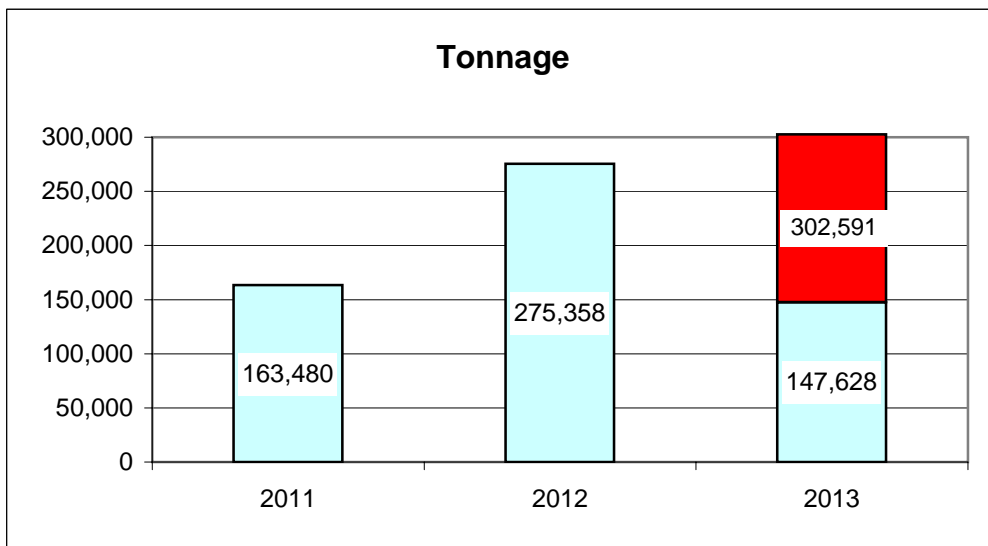
**Port of Everett
Marine Terminals Tonnage Through May 2013**

Port Calls		2013	2012
Port calls YTD		70	55
	ships	45	33
	barges	25	22
Port calls this month	May	17	13
	ship	11	8
	barge	6	5
Port calls last month	April	16	10
	ship	12	6
	barge	4	4
Tonnage		2013	2012
Short Tons YTD		147,628	71,322
	In (general)	49,433	24,806
	Out	18,884	11,928
	Out (logs)	79,311	34,588
Short tons This Month	May	68,334	9,827
	In (general)	15,678	7,103
	Out	3,781	2,724
	Out (logs)	48,875	-
Short tons Last Month	April	18,847	5,995
	In (general)	13,773	4,328
	Out	5,074	1,667
	Out (logs)	-	-
Container Statistics		2013	2012
Number of Units YTD		2,166	2,073
	In	1,455	1,511
	Out	711	562
Number of Units This Month	May	480	448
	In	355	354
	Out	125	94
Number of Units Last Month	April	423	398
	In	277	279
	Out	146	119

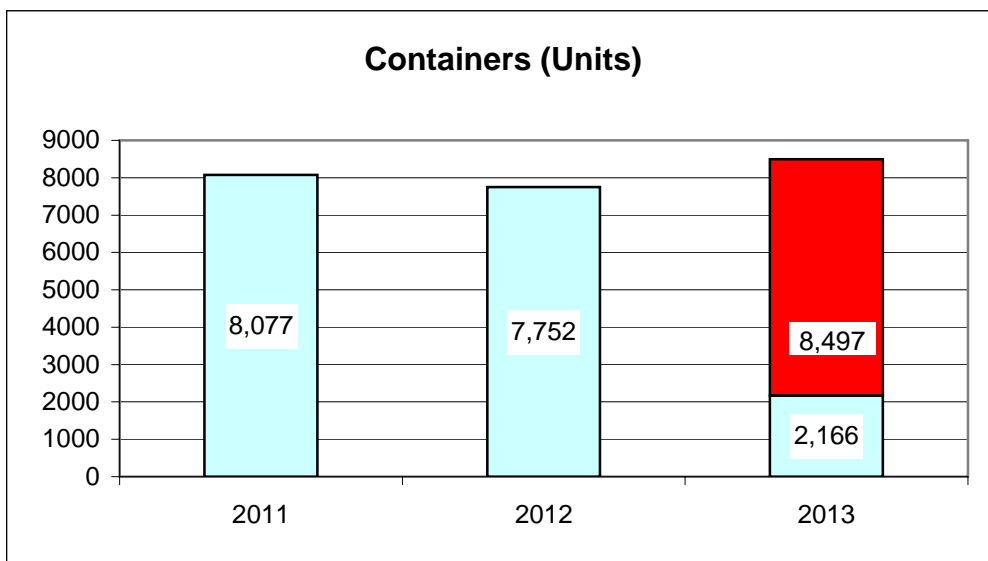
Port of Everett Marine Terminals Statistics Through May 2013



40%



49%



25%