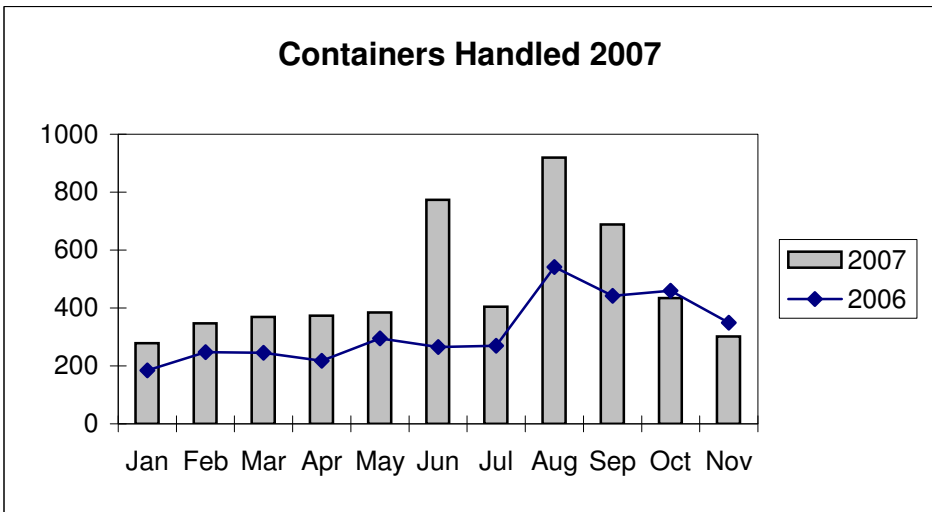
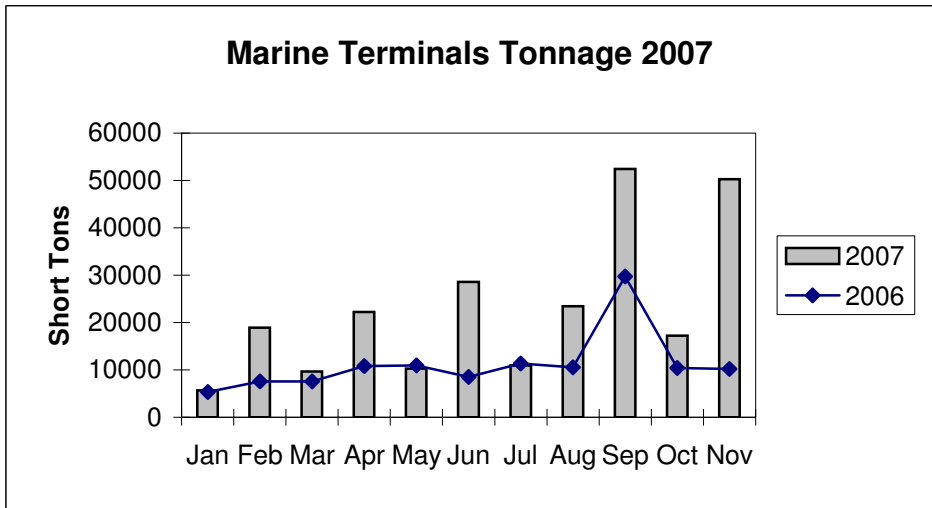
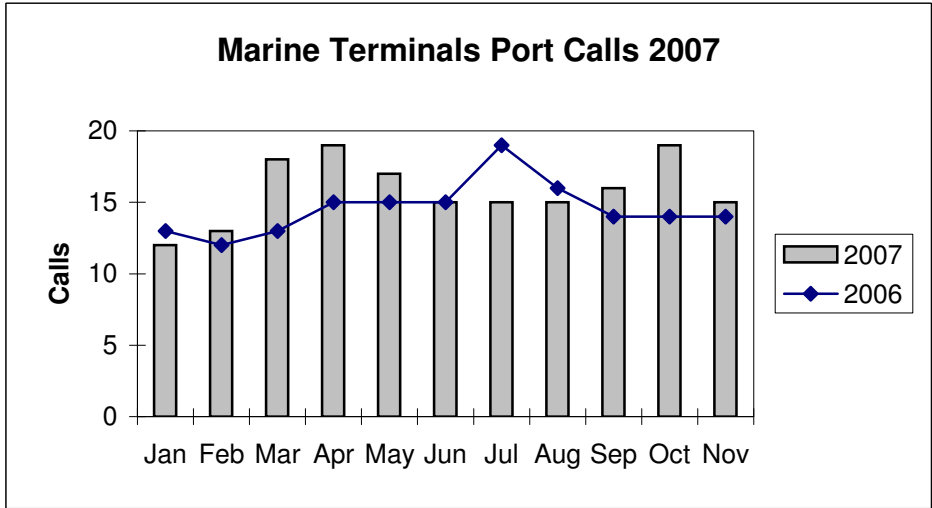


**Port of Everett
Marine Terminals Statistics Through November 2007**



Port of Everett
Marine Terminals Statistics Through November 2007

Port Calls			2007	2006
Port calls YTD			176	160
	ships		116	109
	barges		60	51
Port calls this month		Nov	15	14
	ship		10	10
	barge		5	4
Port calls last month		Oct	19	14
	ship		12	9
	barge		7	5
Tonnage			2007	2006
Short Tons YTD			251,077	122,897
	In (general)		104,458	80,826
	In (cement)		82,539	-
	Out		64,080	42,071
Short tons this month		Nov	50,257	10,199
	In (general)		5,839	5,704
	In (cement)		42,034	-
	Out		2,384	4,495
Short tons last month		Oct	17,252	10,384
	In (general)		13,763	4,668
	In (cement)		-	-
	Out		3,489	5,716
Container Statistics			2007	2006
Number of Units YTD			5,274	3,517
	In		2,042	1,519
	Out		3,232	1,998
Number of Units This Month		Nov	302	349
	In		168	169
	Out		134	180
Number of Units Last Month		Oct	434	460
	In		223	187
	Out		211	273