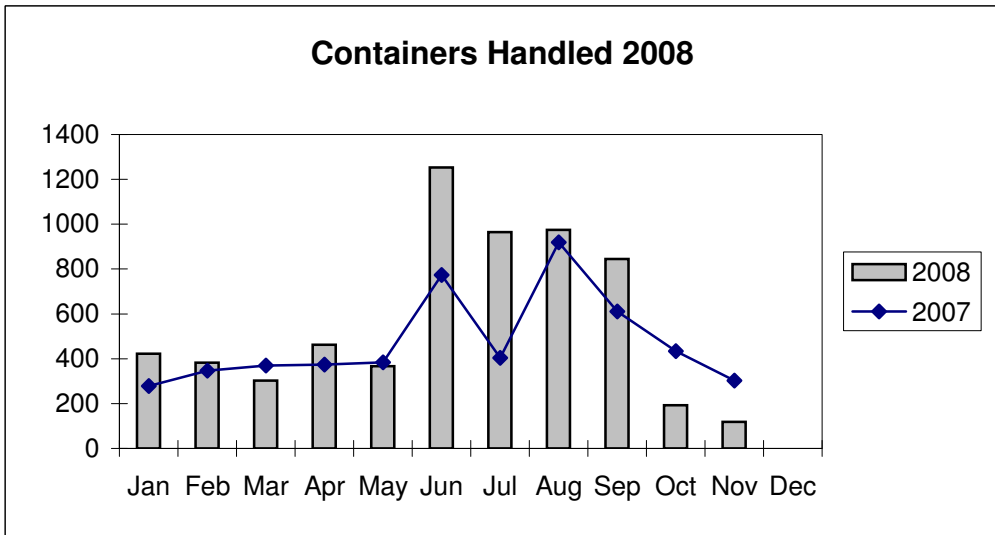
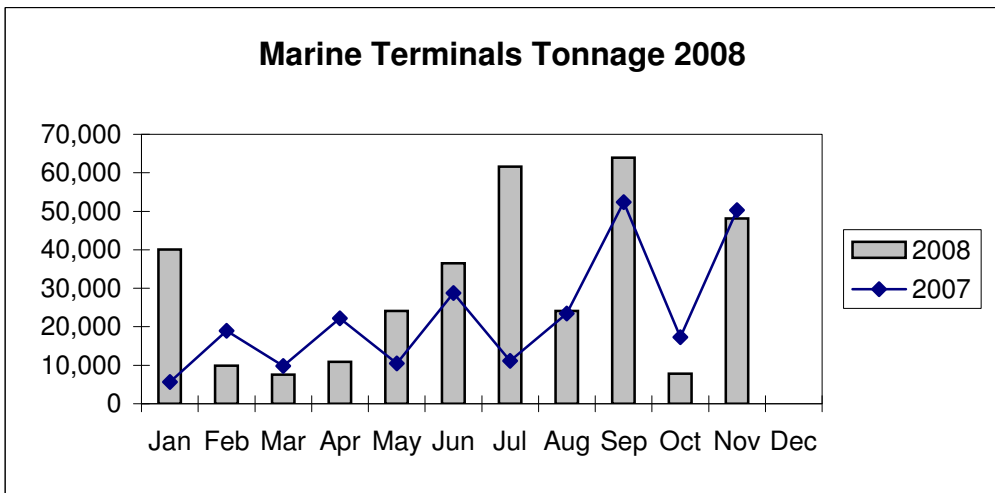
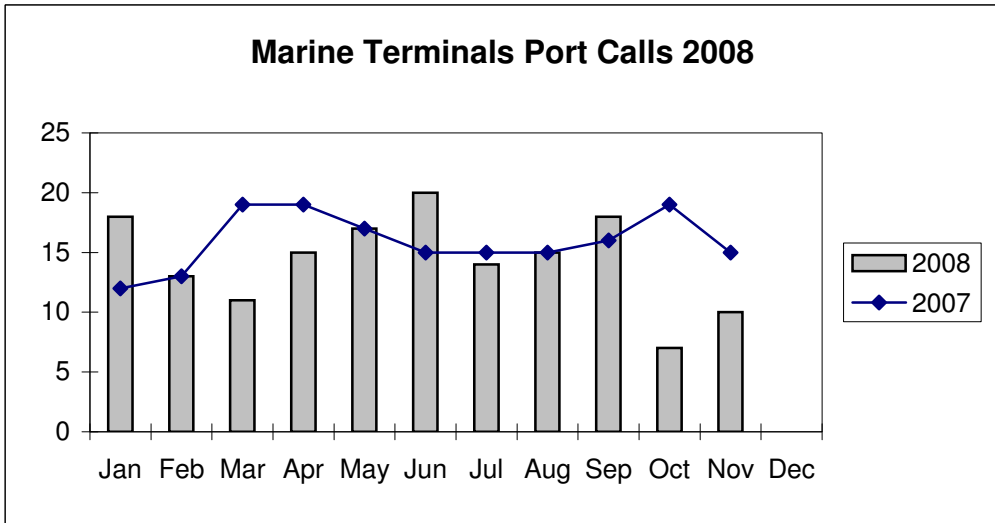


**Port of Everett  
Marine Terminals Statistics Through November 2008**



**Port of Everett**  
**Marine Terminals Statistics Through November 2008**

<b>Port Calls</b>			<b>2008</b>	<b>2007</b>
Port calls YTD			158	175
	ships		111	116
	barges		47	59
Port calls this month		Nov	10	15
	ship		6	10
	barge		4	5
Port calls last month		Oct	7	19
	ship		7	12
	barge		-	7
<b>Tonnage</b>			<b>2008</b>	<b>2007</b>
Short Tons YTD			335,443	251,077
	In (general)		57,393	104,458
	In (cement)		185,488	82,539
	Out		92,562	64,080
Short tons this month		Nov	48,159	50,257
	In (general)		3,042	5,839
	In (cement)		42,063	42,034
	Out		3,054	2,384
Short tons last month		Oct	7,842	17,252
	In (general)		2,463	13,763
	In (cement)		-	-
	Out		5,379	3,489
<b>Container Statistics</b>			<b>2008</b>	<b>2007</b>
Number of Units YTD			6,296	5,274
	In		2,313	2,042
	Out		3,983	3,232
Number of Units This Month		Nov	118	302
	In		-	168
	Out		118	134
Number of Units Last Month		Oct	192	434
	In		-	223
	Out		192	211