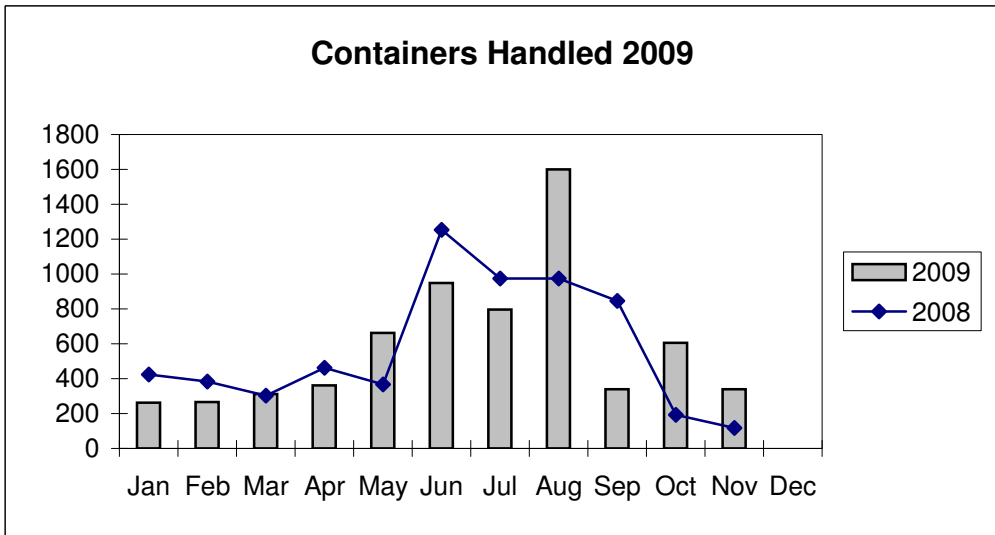
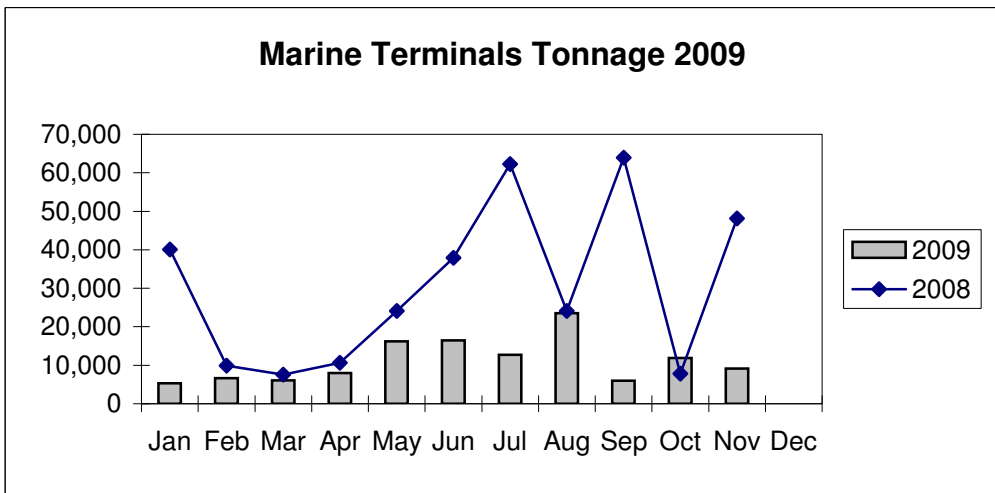
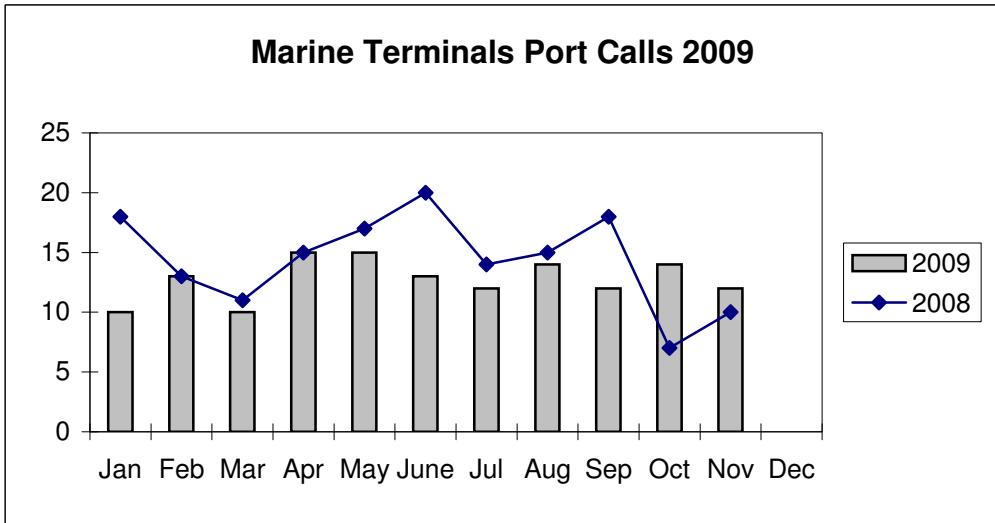


**Port of Everett
Marine Terminals Statistics Through November 2009**



Port of Everett
Marine Terminals Statistics Through November 2009

Port Calls			2009	2008
Port calls YTD			140	158
	ships		92	111
	barges		48	47
Port calls this month		Nov	12	10
	ship		8	6
	barge		4	4
Port calls last month		Oct	14	7
	ship		9	7
	barge		5	-
Tonnage			2009	2008
Short Tons YTD			121,980	335,443
	In (general)		52,444	57,393
	In (cement)		-	185,488
	Out		69,536	92,562
Short tons this month		Nov	9,171	48,159
	In (general)		7,156	3,042
	In (cement)		-	42,063
	Out		2,015	3,054
Short tons last month		Oct	11,857	7,842
	In (general)		3,873	2,463
	In (cement)		-	-
	Out		7,984	5,379
Container Statistics			2009	2008
Number of Units YTD			6,496	6,296
	In		3,127	2,313
	Out		3,369	3,983
Number of Units This Month		Nov	340	118
	In		202	-
	Out		138	118
Number of Units Last Month		Oct	606	192
	In		256	-
	Out		350	192