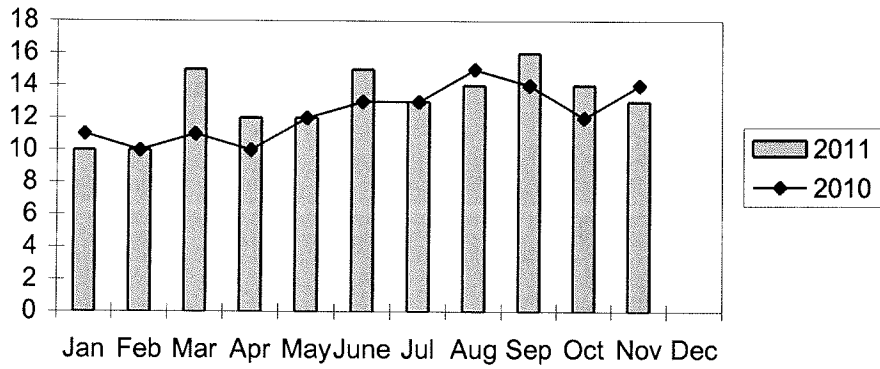
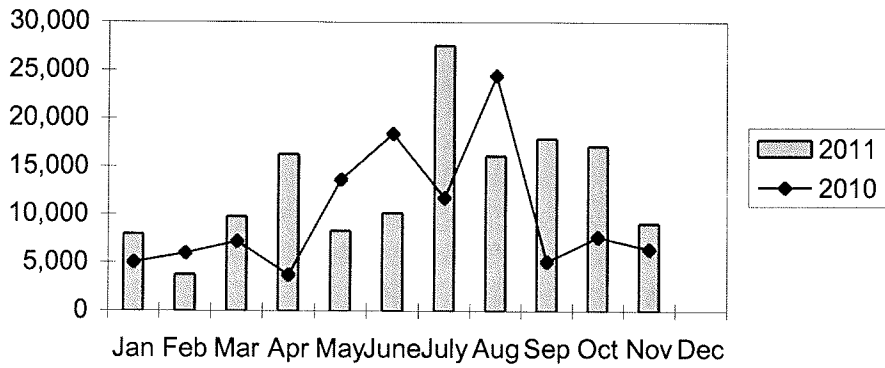


**Port of Everett  
Marine Terminals Statistics Through November 2011**

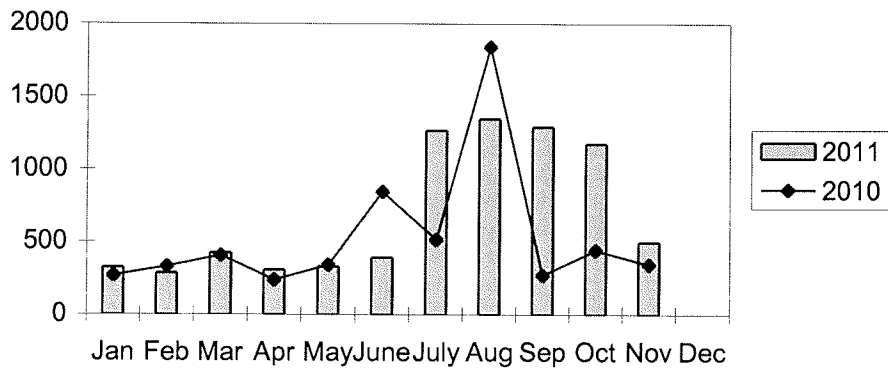
**Marine Terminals Port Calls 2011**



**Marine Terminals Tonnage 2011**



**Containers Handled 2011**



**Port of Everett  
Marine Terminals Statistics Through November 2011**

<b>Port Calls</b>		<b>2011</b>	<b>2010</b>
Port calls YTD		144	135
	ships	92	88
	barges	52	47
Port calls this month	Nov	13	14
	ship	8	8
	barge	5	6
Port calls last month	Oct	14	12
	ship	9	9
	barge	5	3
<b>Tonnage</b>		<b>2011</b>	<b>2010</b>
Short Tons YTD		144,100	109,539
	In (general)	38,698	36,119
	Out	101,352	73,420
	Out (logs)	4,050	-
Short tons this month	Nov	9,088	6,442
	In (general)	4,515	2,861
	Out	4,573	3,581
	Out (logs)	-	-
Short tons last month	Oct	17,116	7,698
	In (general)	4,356	2,414
	Out	12,760	5,284
	Out (logs)	-	-
<b>Container Statistics</b>		<b>2011</b>	<b>2010</b>
Number of Units YTD		7,644	5,857
	In	3,692	2,760
	Out	3,952	3,097
Number of Units This Month	Nov	499	345
	In	336	184
	Out	163	161
Number of Units Last Month	Oct	1,175	444
	In	535	156
	Out	640	288

**Port of Everett  
Marine Terminals Statistics Through November 2011**

