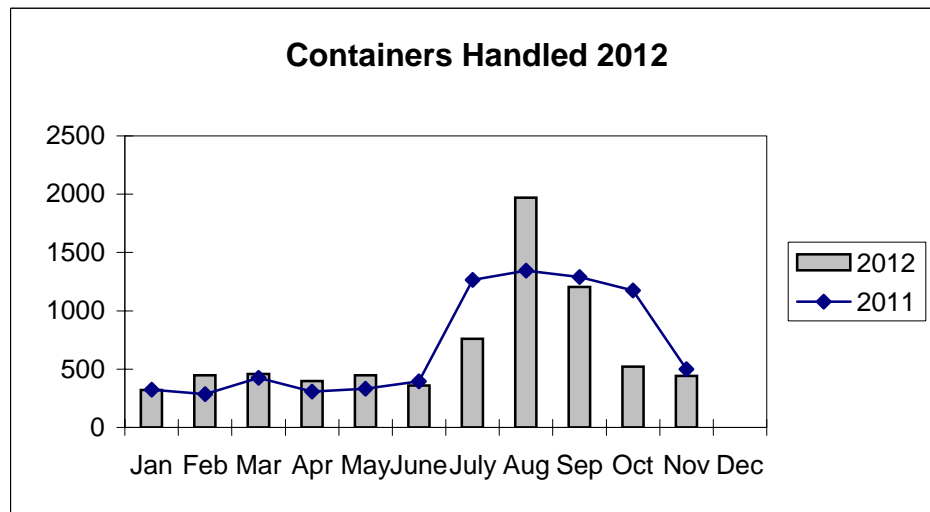
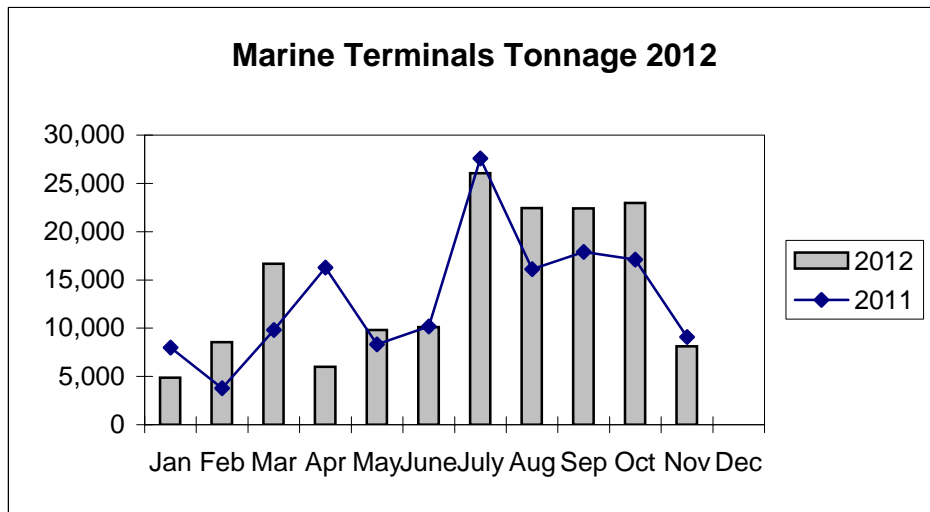
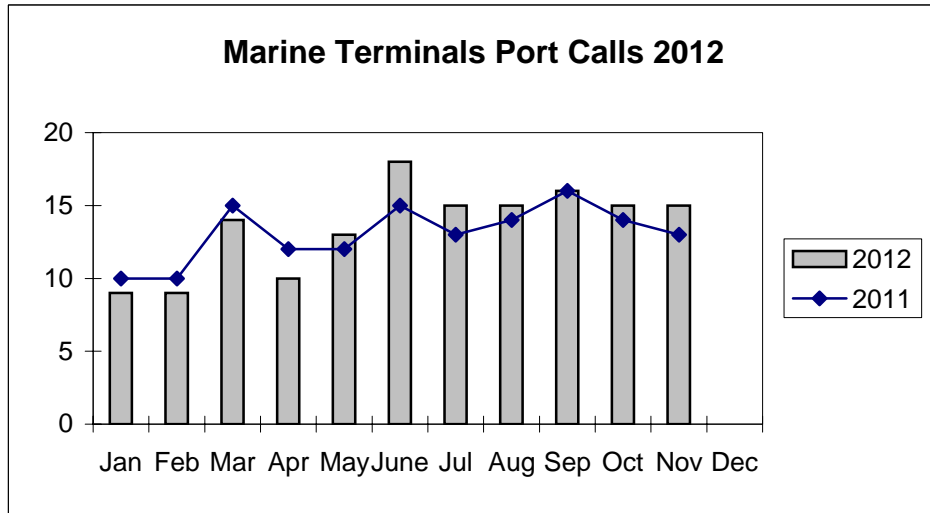


**Port of Everett
Marine Terminals Statistics Through November 2012**



Port of Everett
Marine Terminals Statistics Through November 2012

Port Calls			2012	2011
Port calls YTD			149	144
	ships		89	92
	barges		60	52
Port calls this month		Nov	15	13
	ship		9	8
	barge		6	5
Port calls last month		Oct	15	14
	ship		8	9
	barge		7	5
Tonnage			2012	2011
Short Tons YTD			158,022	144,100
	In (general)		67,795	38,698
	Out		63,398	101,352
	Out (logs)		26,829	4,050
Short tons this month		Nov	8,118	9,088
	In (general)		5,091	4,515
	Out		3,027	4,573
	Out (logs)		-	-
Short tons last month		Oct	22,963	17,116
	In (general)		10,898	4,356
	Out		4,010	12,760
	Out (logs)		8,055	-
Container Statistics			2012	2011
Number of Units YTD			7,329	7,644
	In		4,591	3,692
	Out		2,738	3,952
Number of Units This Month		Nov	442	499
	In		335	336
	Out		107	163
Number of Units Last Month		Oct	521	1,175
	In		240	535
	Out		281	640

**Port of Everett
Marine Terminals Statistics Through November 2012**

