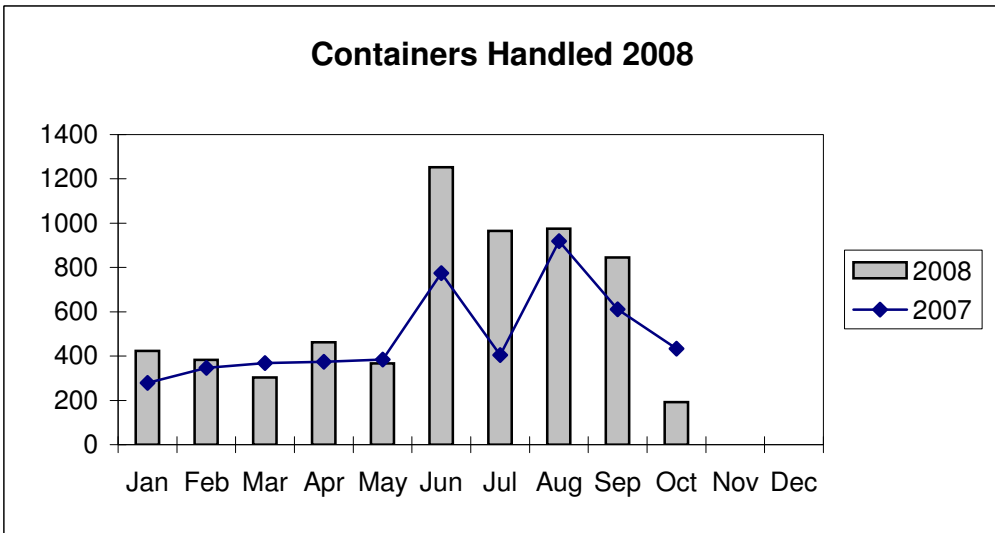
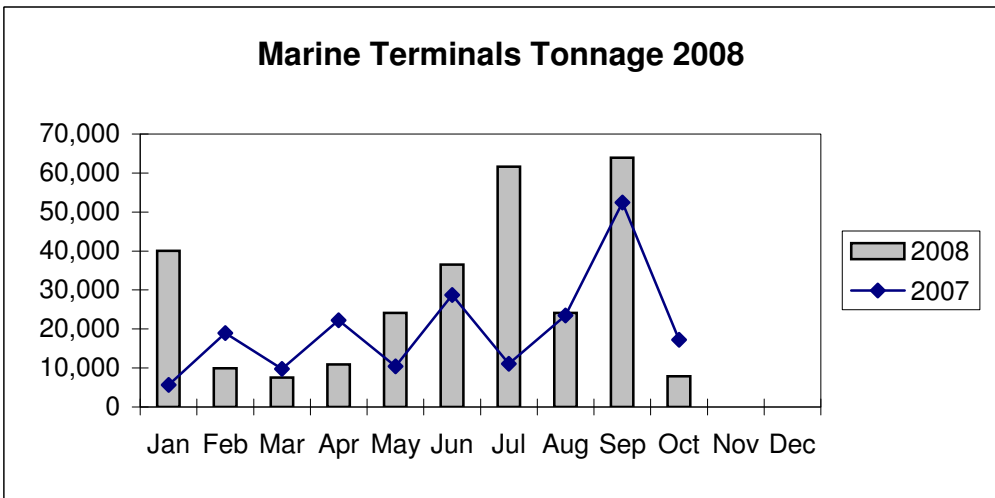
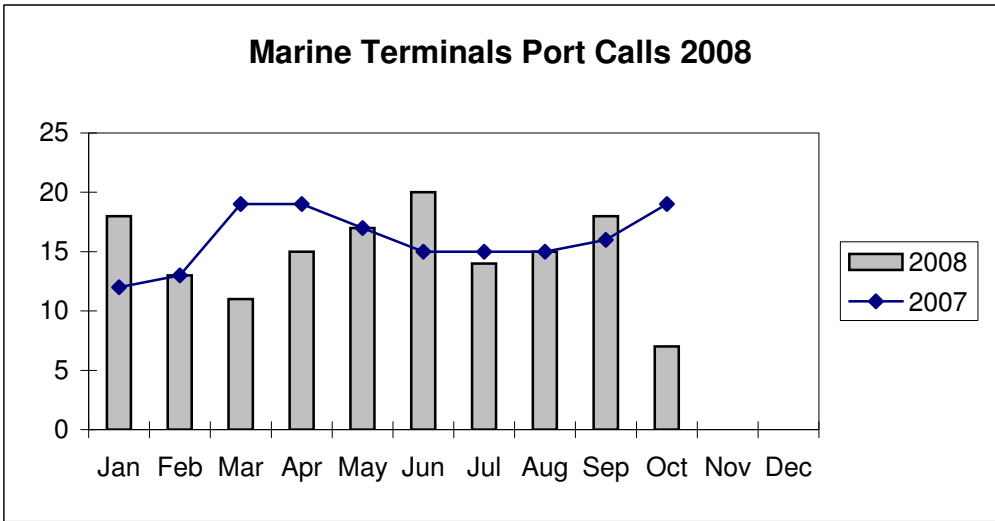


**Port of Everett  
Marine Terminals Statistics Through October 2008**



**Port of Everett**  
**Marine Terminals Statistics Through October 2008**

<b>Port Calls</b>			<b>2008</b>	<b>2007</b>
Port calls YTD			148	160
	ships		105	106
	barges		43	54
Port calls this month		Oct	7	19
	ship		7	12
	barge		-	7
Port calls last month		Sep	18	16
	ship		14	11
	barge		4	5
<b>Tonnage</b>			<b>2008</b>	<b>2007</b>
Short Tons YTD			287,283	200,820
	In		54,350	98,619
	Cement		143,425	40,505
	Out		89,508	61,696
Short tons this month		Oct	7,842	17,252
	In		2,463	13,763
	Cement		-	
	Out		5,379	3,489
Short tons last month		Sep	63,890	52,726
	In		7,244	3,154
	Cement		43,523	40,505
	Out		13,123	9,067
<b>Container Statistics</b>			<b>2008</b>	<b>2007</b>
Number of Units YTD			6,178	4,972
	In		2,313	1,874
	Out		3,865	3,098
Number of Units This Month		Oct	192	434
	In		-	223
	Out		192	211
Number of Units Last Month		Sep	845	688
	In		234	232
	Out		611	456