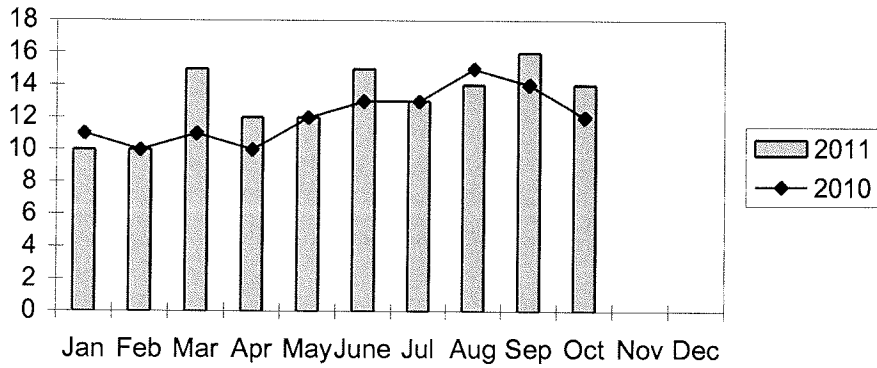
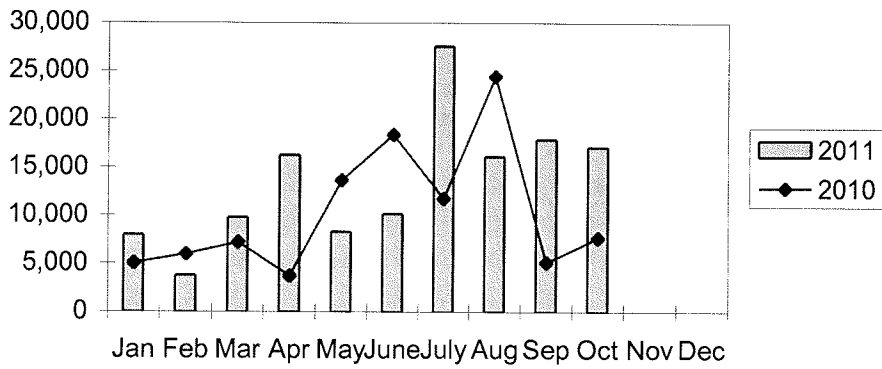


**Port of Everett
Marine Terminals Statistics Through October 2011**

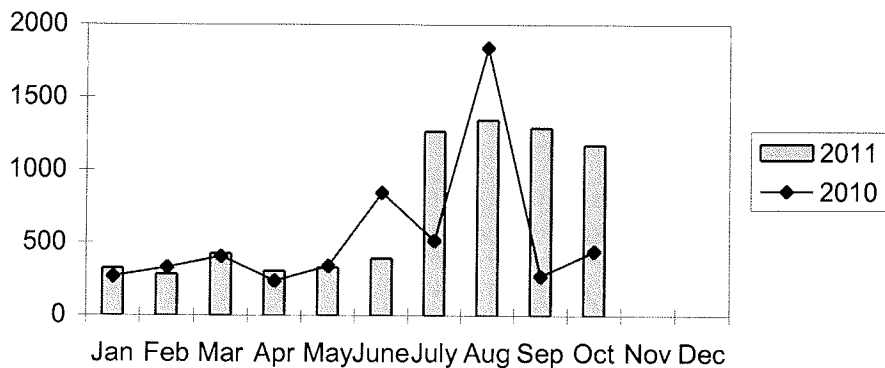
Marine Terminals Port Calls 2011



Marine Terminals Tonnage 2011



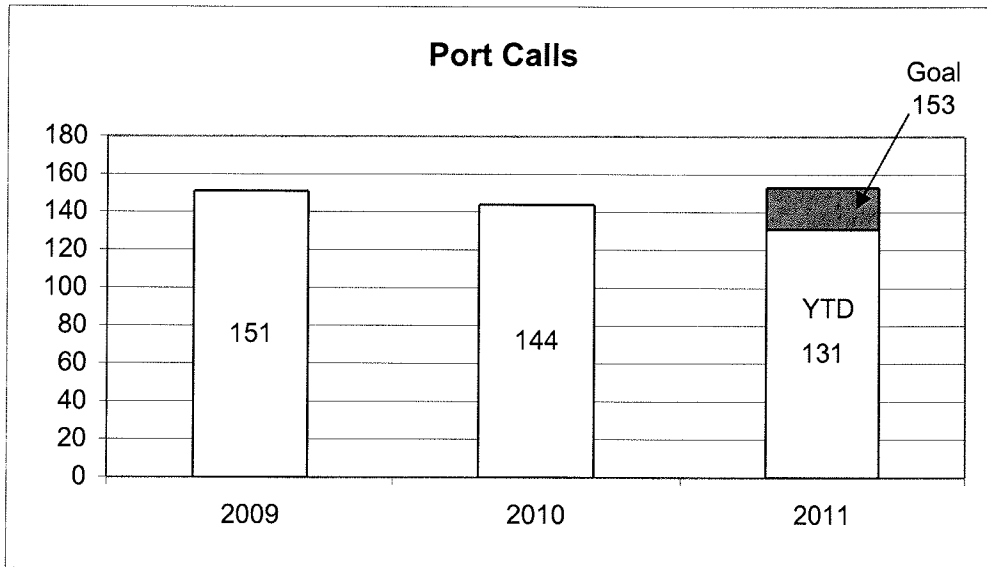
Containers Handled 2011



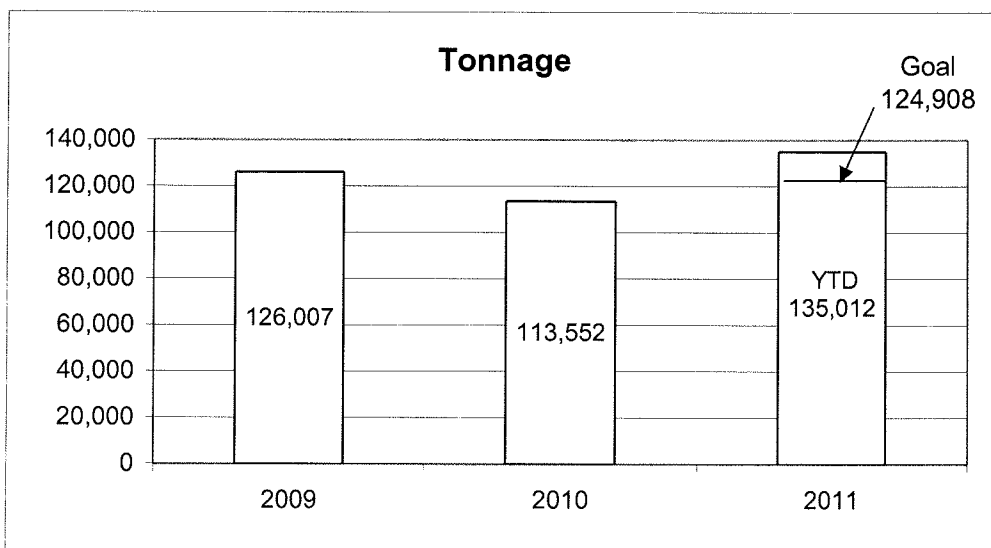
Port of Everett
Marine Terminals Statistics Through October 2011

Port Calls		2011	2010
Port calls YTD		131	121
	ships	84	80
	barges	47	41
Port calls this month	Oct	14	12
	ship	9	9
	barge	5	3
Port calls last month	Sep	16	14
	ship	10	10
	barge	6	4
Tonnage		2011	2010
Short Tons YTD		135,012	103,097
	In (general)	34,183	33,258
	Out	96,779	69,839
	Out (logs)	4,050	-
Short tons this month	Oct	17,116	7,698
	In (general)	4,356	2,414
	Out	12,760	5,284
	Out (logs)	-	-
Short tons last month	Sep	17,884	5,133
	In (general)	4,943	2,728
	Out	12,941	2,405
	Out (logs)	-	-
Container Statistics		2011	2010
Number of Units YTD		7,145	5,512
	In	3,356	2,576
	Out	3,789	2,936
Number of Units This Month	Oct	1,175	444
	In	535	156
	Out	640	288
Number of Units Last Month	Sep	1,291	273
	In	770	159
	Out	521	114

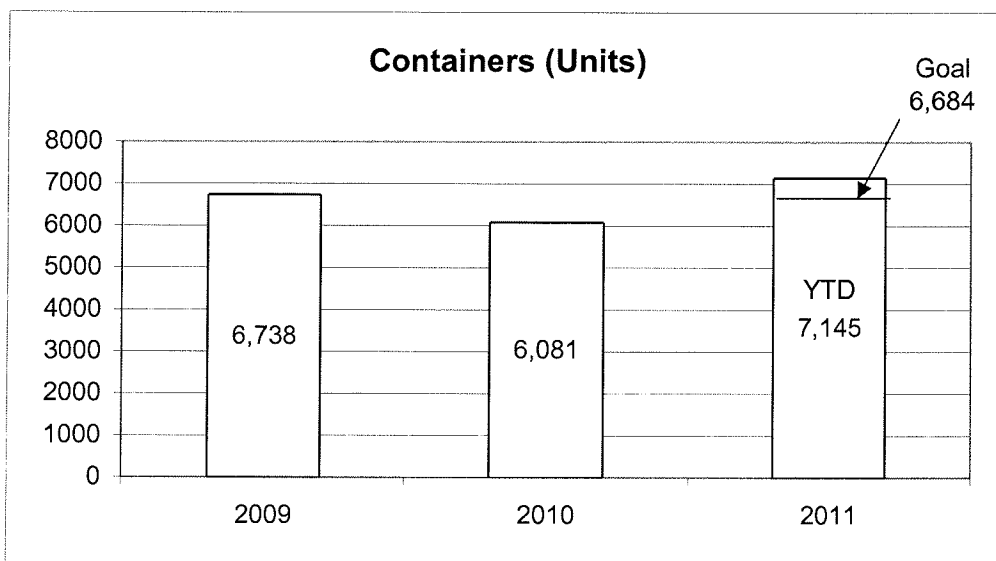
**Port of Everett
Marine Terminals Statistics Through October 2011**



86%



108%



107%