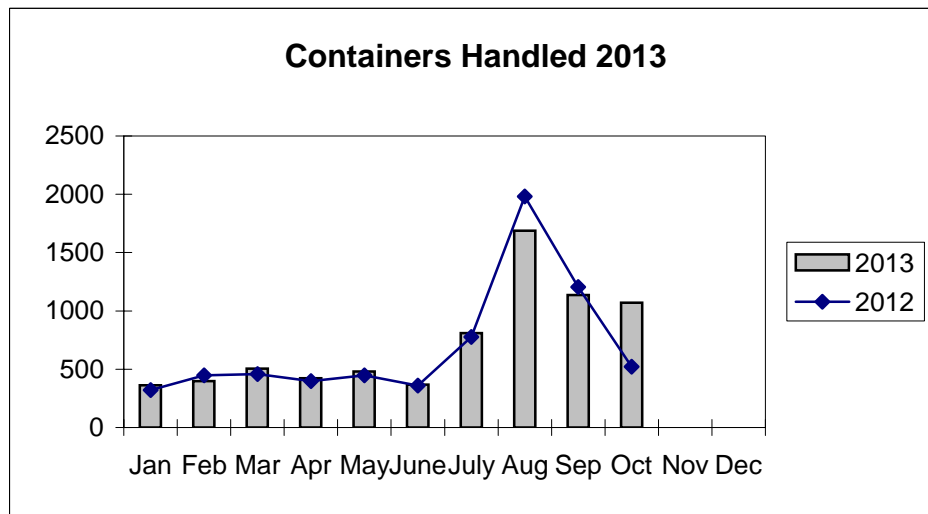
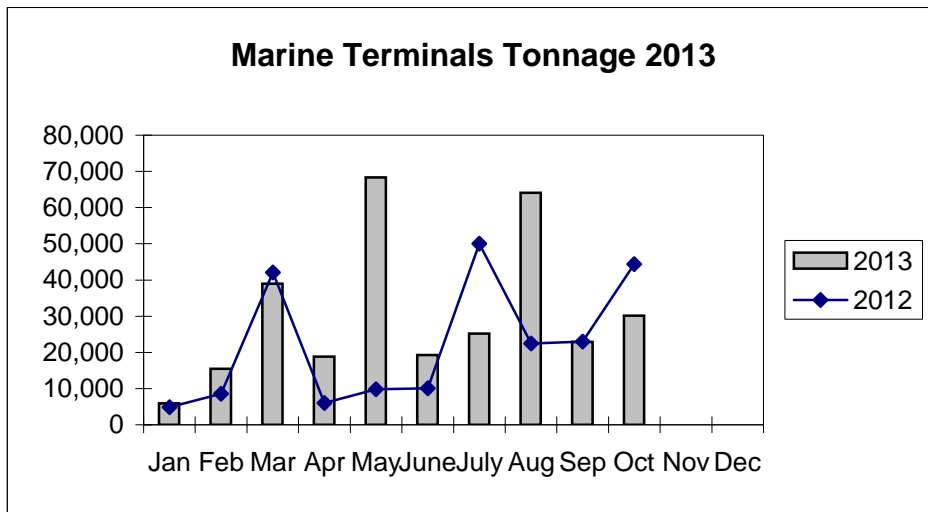
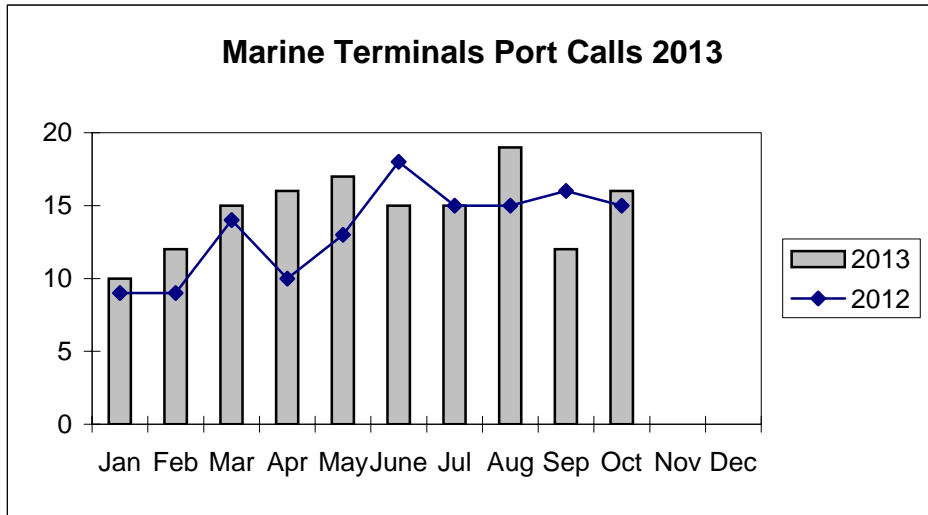


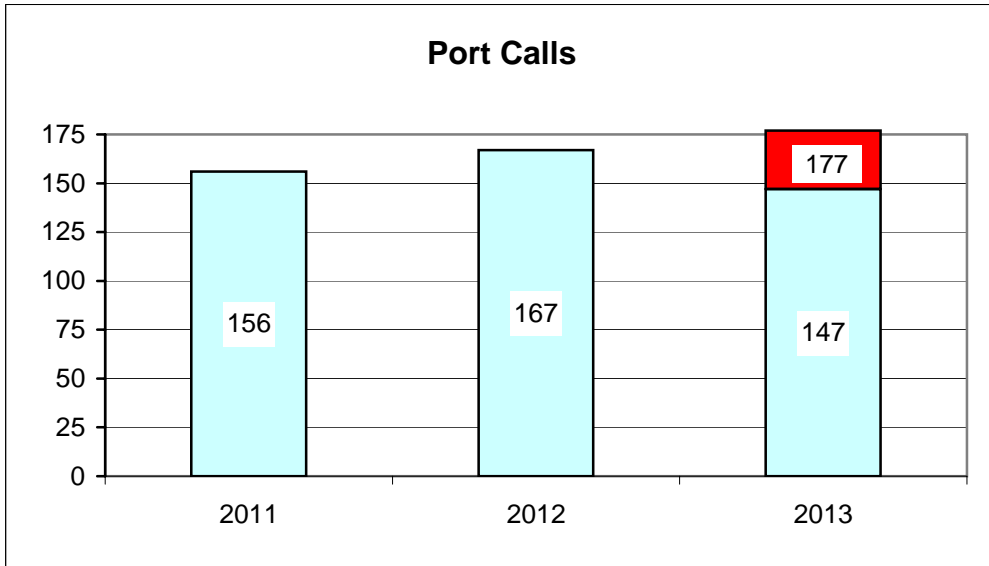
**Port of Everett
Marine Terminals Statistics Through October 2013**



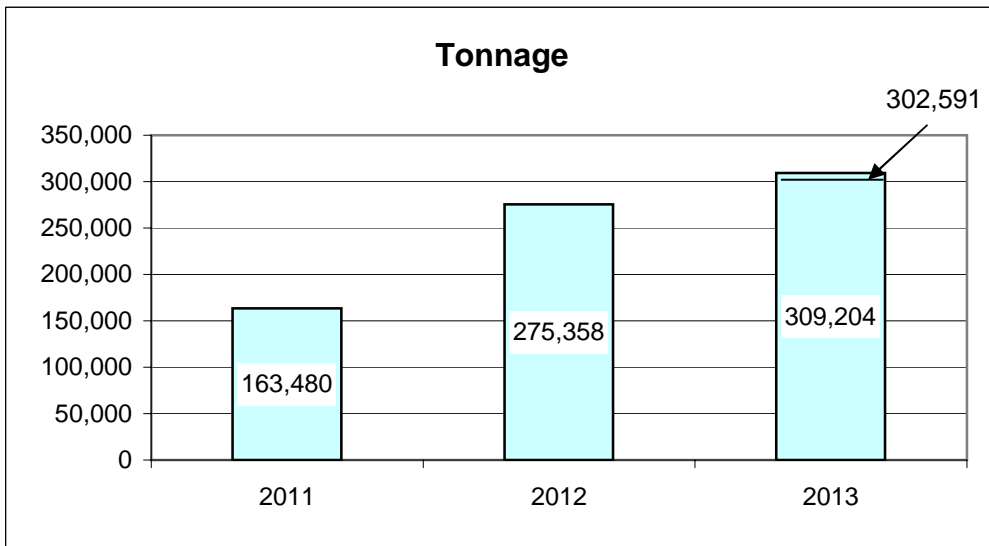
Port of Everett
Marine Terminals Statistics Through October 2013

Port Calls			2013	2012
Port calls YTD			147	134
	ships		96	80
	barges		51	54
Port calls this month		Oct	16	15
	ship		9	8
	barge		7	7
Port calls last month		Sep	12	16
	ship		8	11
	barge		4	5
Tonnage			2013	2012
Short Tons YTD			309,204	221,280
	In (general)		114,203	63,328
	Out		66,075	60,646
	Out (logs)		128,926	97,306
Short tons this month		Oct	30,113	44,336
	In (general)		6,402	10,898
	Out		4,580	4,010
	Out (logs)		19,131	29,428
Short tons last month		Sep	22,855	23,015
	In (general)		14,034	11,077
	Out		8,821	11,938
	Out (logs)		-	-
Container Statistics			2013	2012
Number of Units YTD			7,237	6,914
	In		4,396	4,266
	Out		2,841	2,648
Number of Units This Month		Oct	1,070	521
	In		786	240
	Out		284	281
Number of Units Last Month		Sep	1,136	1,204
	In		696	664
	Out		440	540

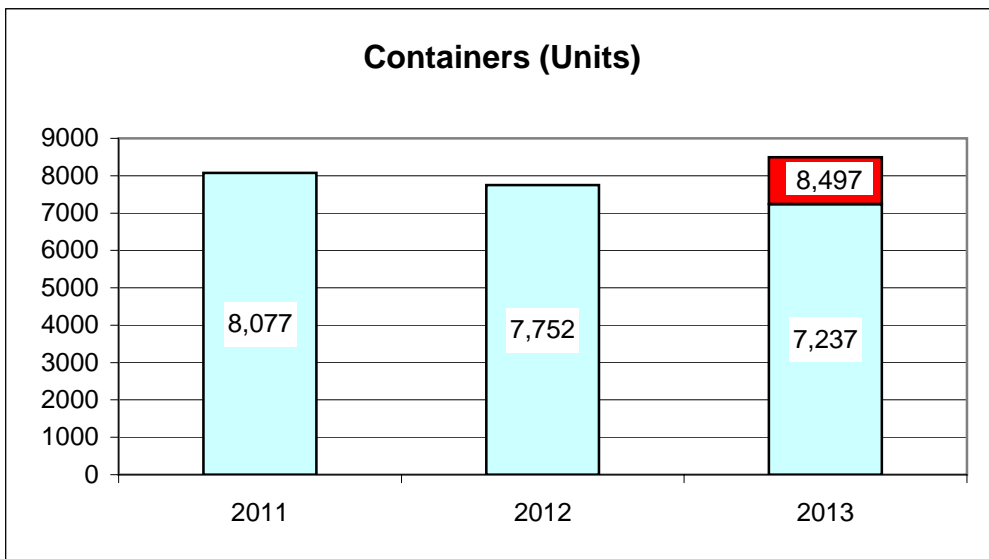
**Port of Everett
Marine Terminals Statistics Through October 2013**



83%



102%



85%