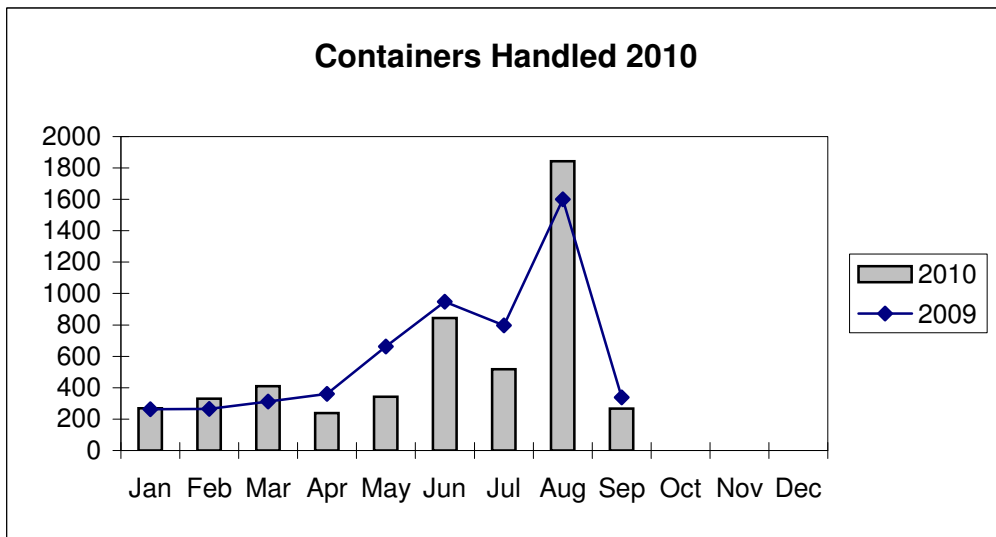
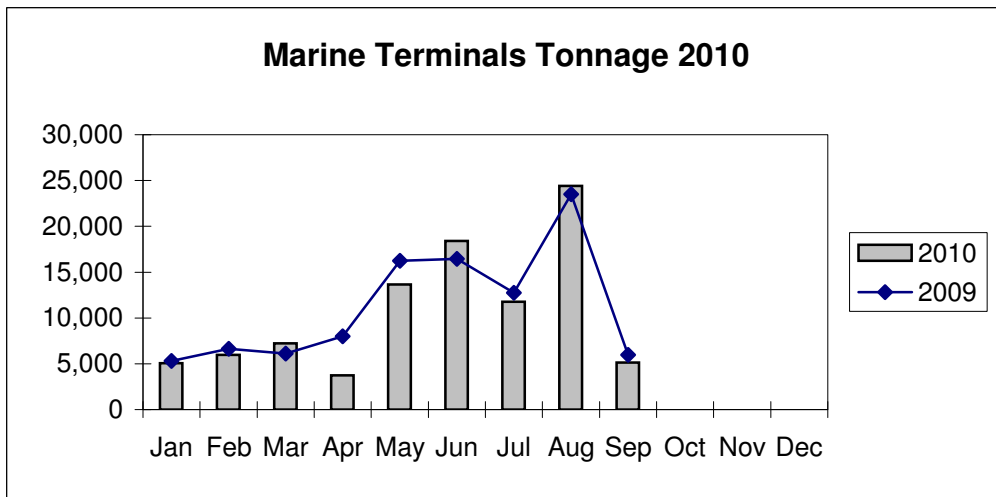
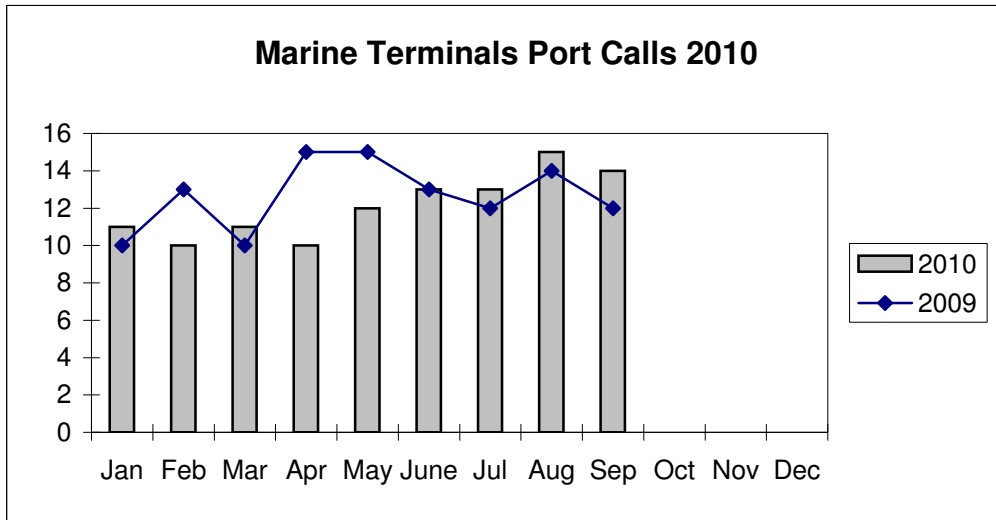


**Port of Everett
Marine Terminals Statistics Through September 2010**



**Port of Everett
Marine Terminals Statistics Through September 2010**

Port Calls		2010	2009
Port calls YTD		109	114
	ships	71	75
	barges	38	39
Port calls this month	Sep	14	12
	ship	10	8
	barge	4	4
Port calls last month	Aug	15	14
	ship	11	10
	barge	4	4
Tonnage		2010	2009
Short Tons YTD		95,399	100,950
	In	30,844	41,414
	Out	64,555	59,536
Short tons this month	Sep	5,134	5,965
	In	2,729	3,711
	Out	2,405	2,254
Short tons last month	Aug	24,425	23,496
	In	8,832	3,854
	Out	15,593	19,642
Container Statistics		2010	2009
Number of Units YTD		5,062	5,550
	In	2,420	2,669
	Out	2,642	2,881
Number of Units This Month	Sep	267	339
	In	159	216
	Out	108	123
Number of Units Last Month	Aug	1,842	1,300
	In	1,099	380
	Out	743	920