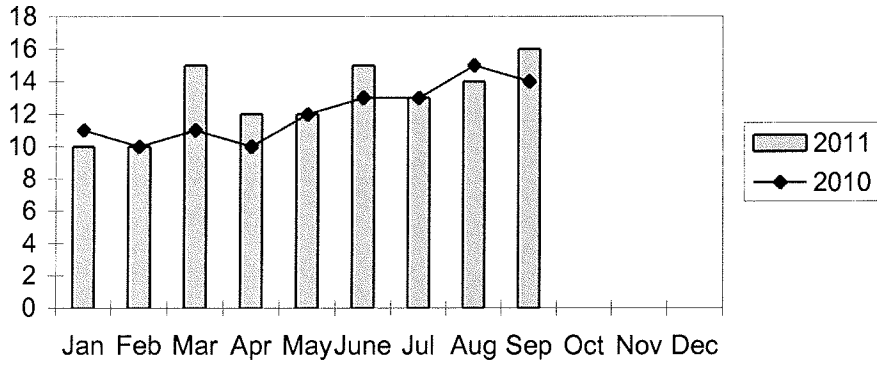
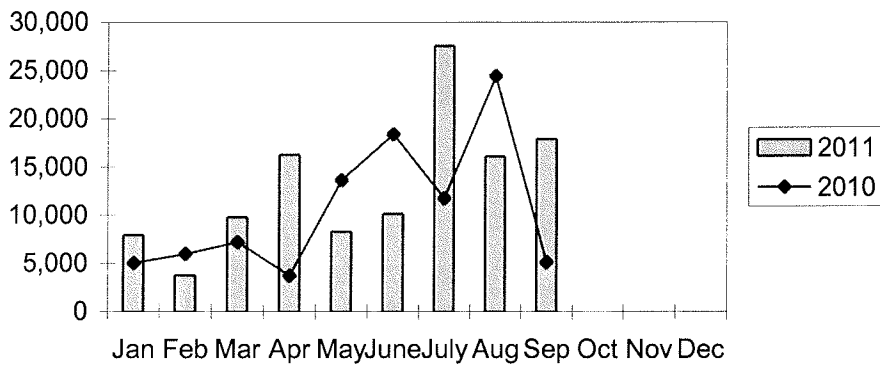


**Port of Everett  
Marine Terminals Statistics Through September 2011**

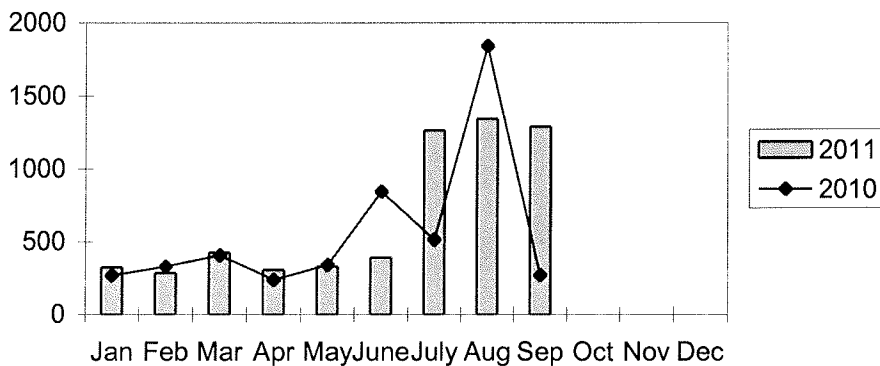
**Marine Terminals Port Calls 2011**



**Marine Terminals Tonnage 2011**



**Containers Handled 2011**



**Port of Everett**  
**Marine Terminals Statistics Through September 2011**

<b>Port Calls</b>			<b>2011</b>	<b>2010</b>
Port calls YTD			117	109
	ships		76	71
	barges		41	38
Port calls this month		Sep	16	14
	ship		10	10
	barge		6	4
Port calls last month		Aug	14	15
	ship		10	11
	barge		4	4
<b>Tonnage</b>			<b>2011</b>	<b>2010</b>
Short Tons YTD			117,884	95,399
	In (general)		29,815	30,844
	Out		84,019	64,555
	Out (logs)		4,050	-
Short tons this month		Sep	17,884	5,134
	In (general)		4,943	2,729
	Out		12,941	2,405
	Out (logs)		-	-
Short tons last month		Aug	16,094	24,425
	In (general)		4,656	8,832
	Out		11,438	15,593
	Out (logs)		-	-
<b>Container Statistics</b>			<b>2011</b>	<b>2010</b>
Number of Units YTD			5,970	5,062
	In		2,821	2,420
	Out		3,149	2,642
Number of Units This Month		Sep	1,291	273
	In		770	159
	Out		521	114
Number of Units Last Month		Aug	1,345	1,842
	In		794	1,099
	Out		551	743