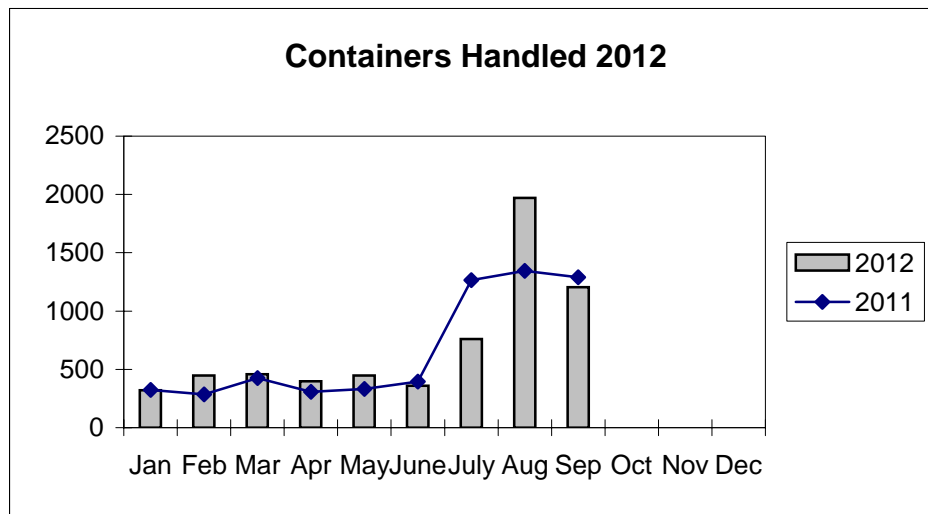
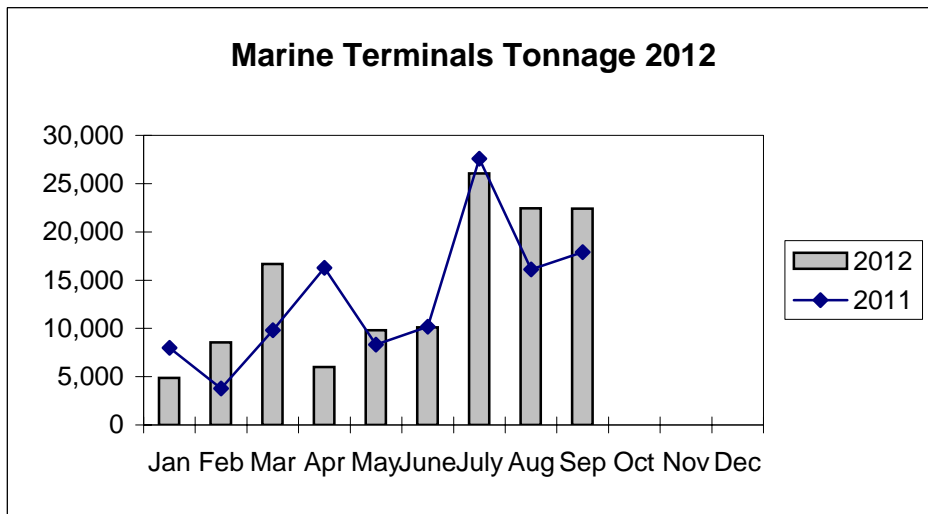
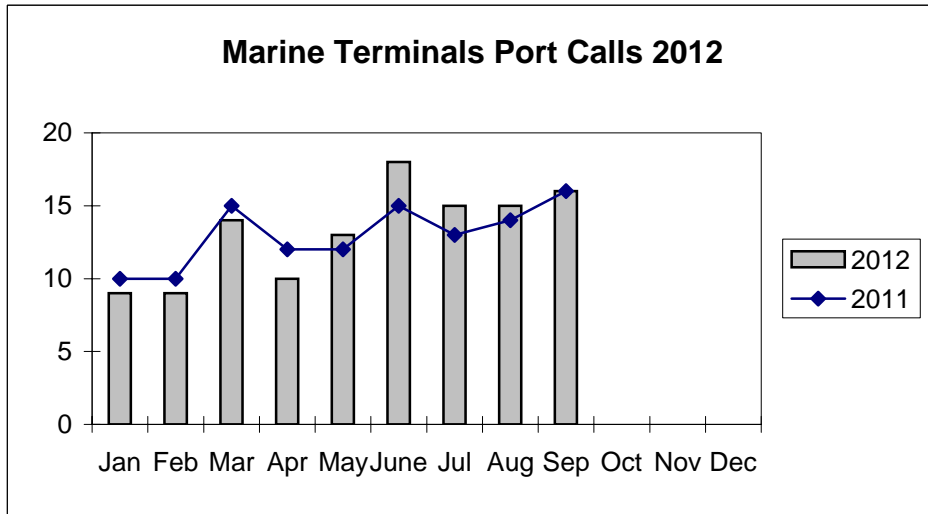


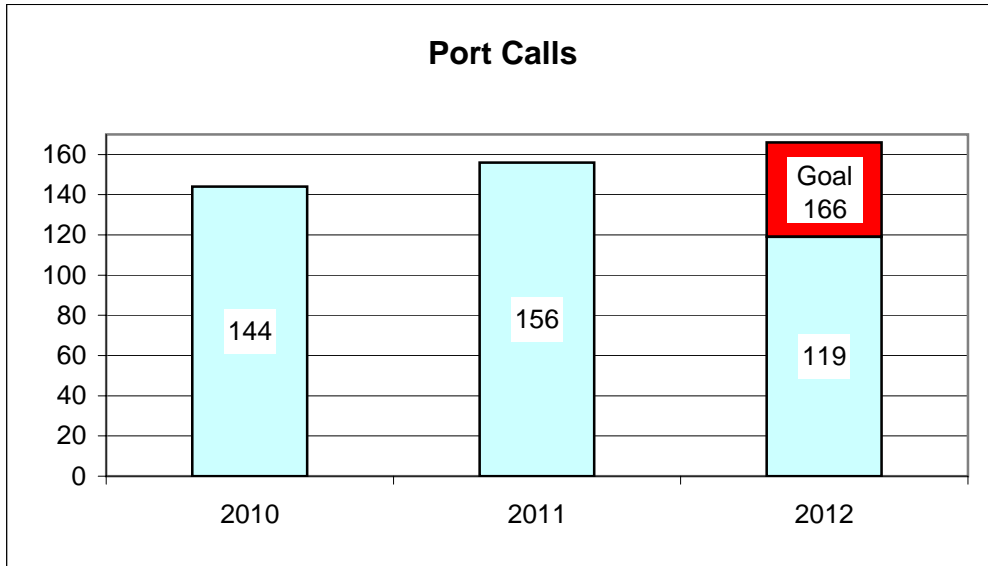
**Port of Everett
Marine Terminals Statistics Through September 2012**



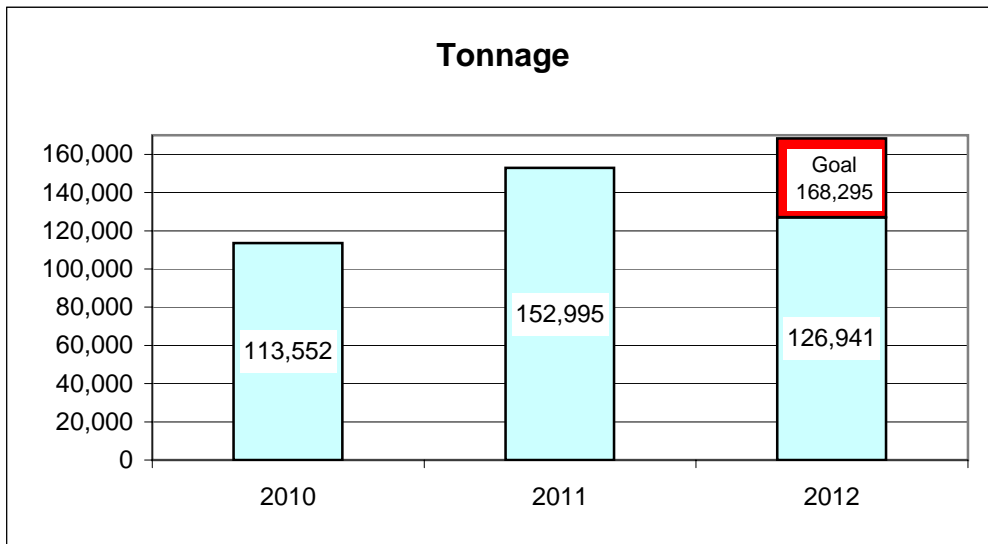
Port of Everett
Marine Terminals Statistics Through September 2012

Port Calls			2012	2011
Port calls YTD			119	117
	ships		72	76
	barges		47	41
Port calls this month		Sep	16	16
	ship		11	10
	barge		5	6
Port calls last month		Aug	15	14
	ship		10	10
	barge		5	4
Tonnage			2012	2011
Short Tons YTD			126,941	117,884
	In (general)		51,806	29,815
	Out		56,361	84,019
	Out (logs)		18,774	4,050
Short tons this month		Sep	22,399	17,884
	In (general)		10,461	4,943
	Out		11,938	12,941
	Out (logs)		-	-
Short tons last month		Aug	22,450	16,094
	In (general)		6,063	4,656
	Out		16,387	11,438
	Out (logs)		-	-
Container Statistics			2012	2011
Number of Units YTD			6,366	5,970
	In		4,016	2,821
	Out		2,350	3,149
Number of Units This Month		Sep	1,204	1,291
	In		664	770
	Out		540	521
Number of Units Last Month		Aug	1,971	1,345
	In		1,243	794
	Out		728	551

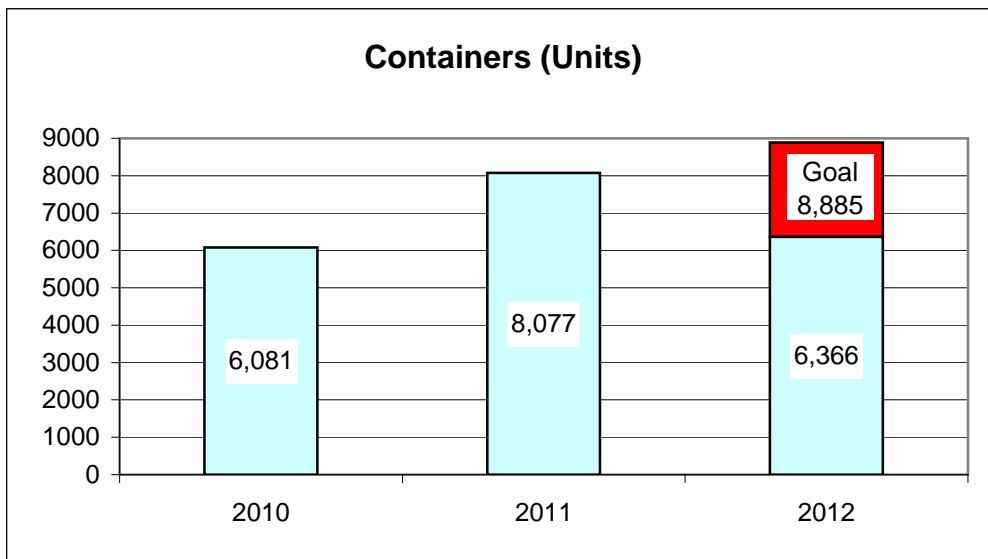
**Port of Everett
Marine Terminals Statistics Through September 2012**



72%



75%



72%