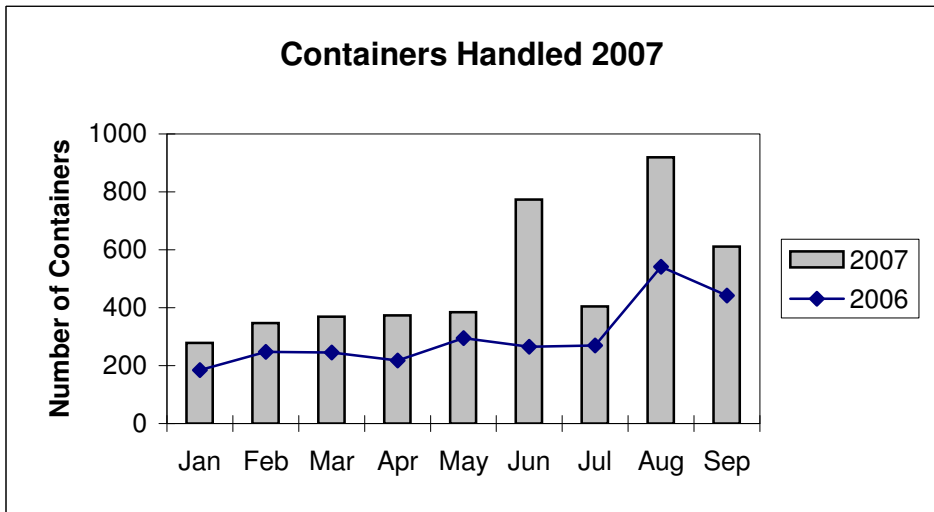
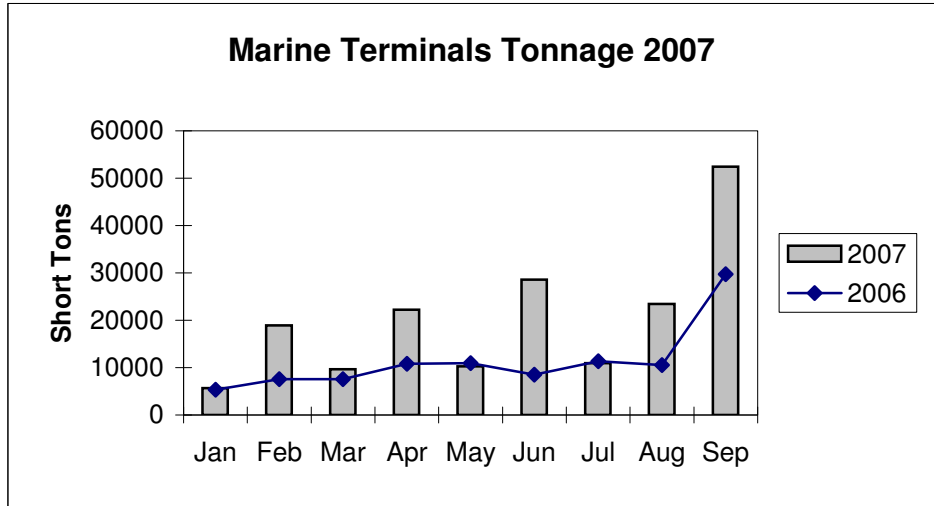
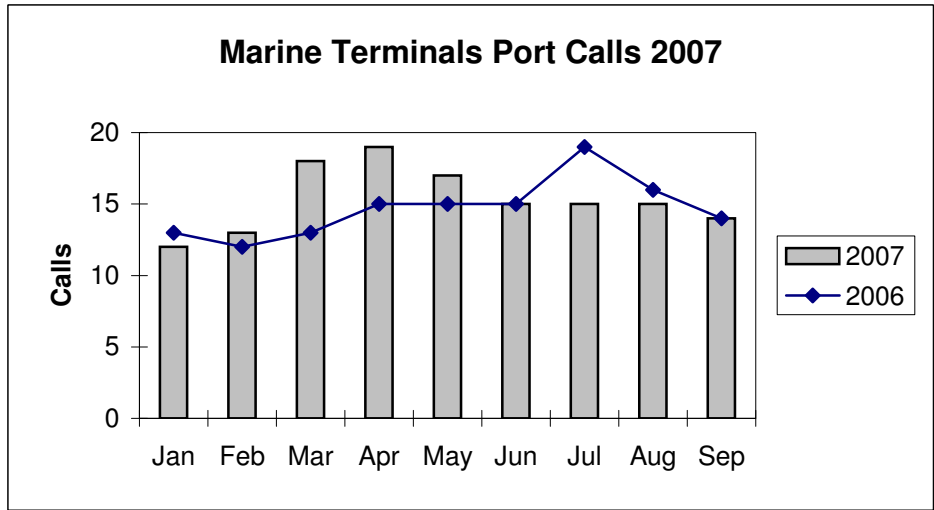


**Port of Everett  
Marine Terminals Statistics Through September 2007**



**Port of Everett  
Marine Terminals Statistics Through September 2007**

<b>Port Calls</b>			<b>2007</b>	<b>2006</b>
Port calls YTD			139	132
	ships		92	90
	barges		47	42
Port calls this month		Sep	14	14
	ship		9	9
	barge		5	5
Port calls last month		Aug	15	16
	ship		9	11
	barge		6	5
<b>Tonnage</b>			<b>2007</b>	<b>2006</b>
Short Tons YTD			183,255	102,313
	In		125,048	70,454
	Out		58,207	31,859
Short tons this month		Sep	52,413	29,707
	In		43,346	23,454
	Out		9,067	6,253
Short tons last month		Aug	23,470	10,533
	In		10,114	4,518
	Out		13,356	6,015
<b>Container Statistics</b>			<b>2007</b>	<b>2006</b>
Number of Units YTD			3,861	2,708
	In		1,574	1,163
	Out		2,287	1,545
Number of Units This Month		Sep	611	442
	In		155	142
	Out		456	300
Number of Units Last Month		Aug	919	541
	In		186	151
	Out		733	390