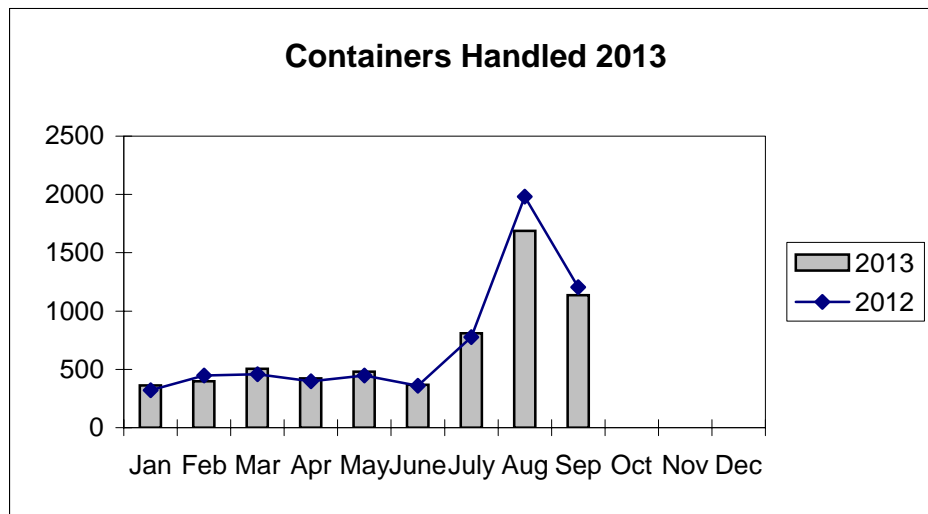
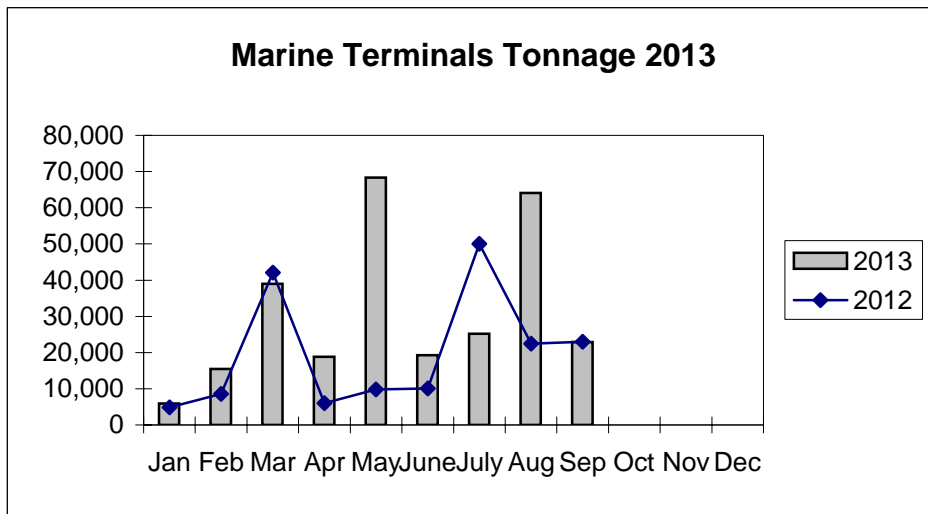
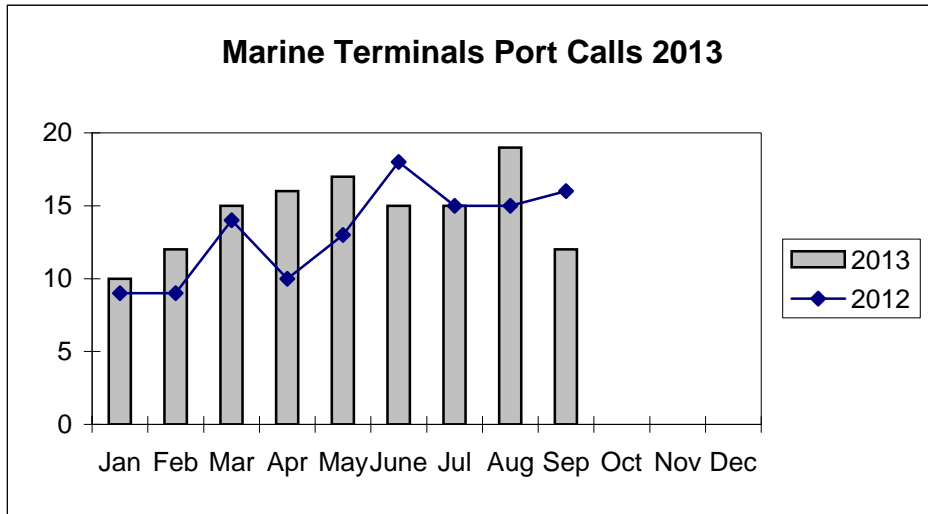


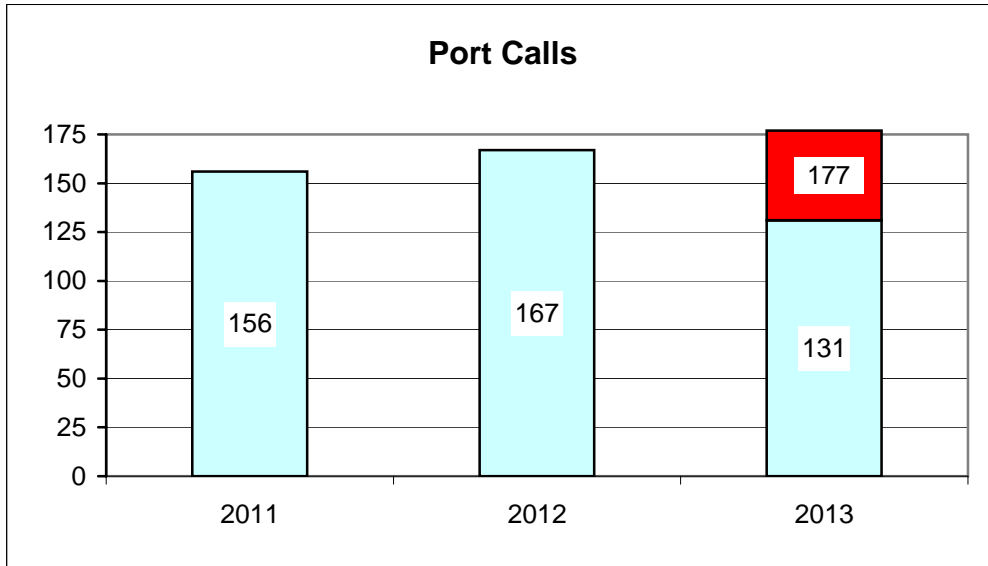
**Port of Everett
Marine Terminals Statistics Through September 2013**



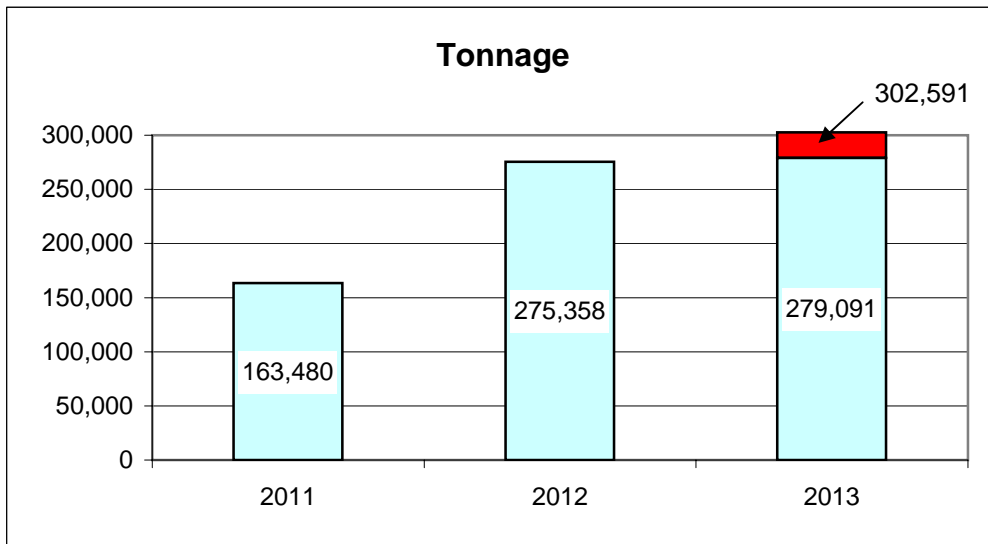
Port of Everett
Marine Terminals Statistics Through September 2013

Port Calls			2013	2012
Port calls YTD			131	119
	ships		87	72
	barges		44	47
Port calls this month		Sep	12	16
	ship		8	11
	barge		4	5
Port calls last month		Aug	19	15
	ship		13	10
	barge		6	5
Tonnage			2013	2012
Short Tons YTD			279,091	176,943
	In (general)		107,801	52,429
	Out		61,495	56,636
	Out (logs)		109,795	67,878
Short tons this month		Sep	22,855	23,015
	In (general)		14,034	11,077
	Out		8,821	11,938
	Out (logs)		-	-
Short tons last month		Aug	64,114	22,450
	In (general)		15,634	6,063
	Out		17,996	16,387
	Out (logs)		30,484	-
Container Statistics			2013	2012
Number of Units YTD			6,167	6,393
	In		3,610	4,026
	Out		2,557	2,367
Number of Units This Month		Sep	1,136	1,204
	In		696	664
	Out		440	540
Number of Units Last Month		Aug	1,687	1,971
	In		870	1,243
	Out		817	728

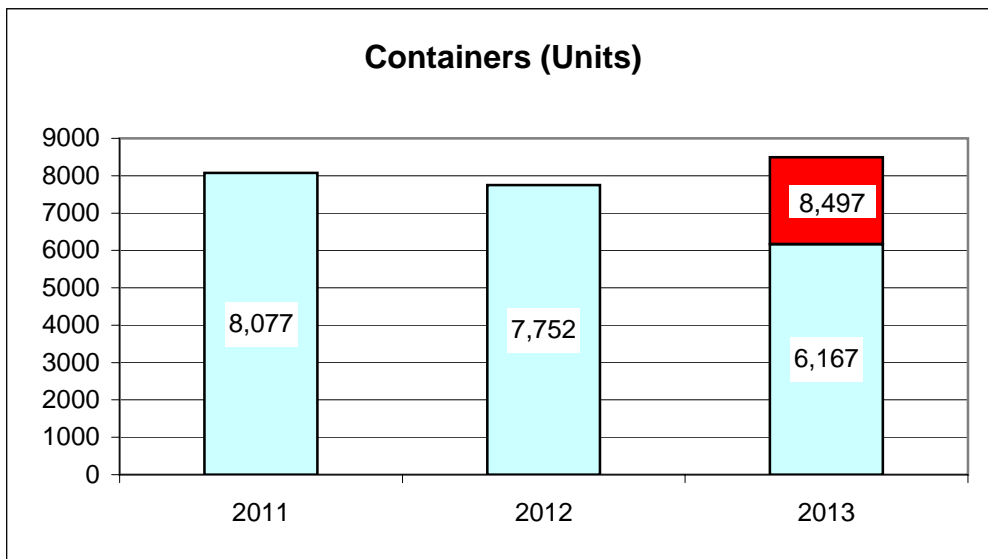
**Port of Everett
Marine Terminals Statistics Through September 2013**



74%



92%



73%