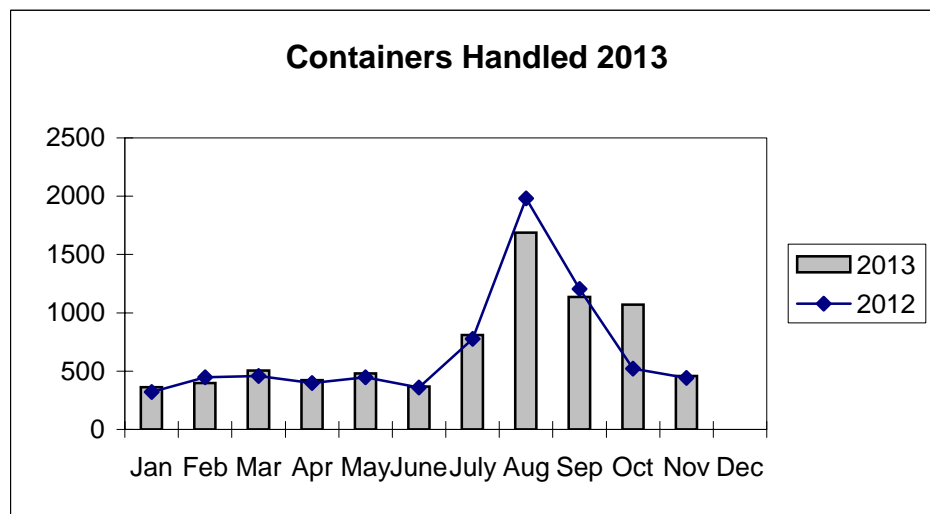
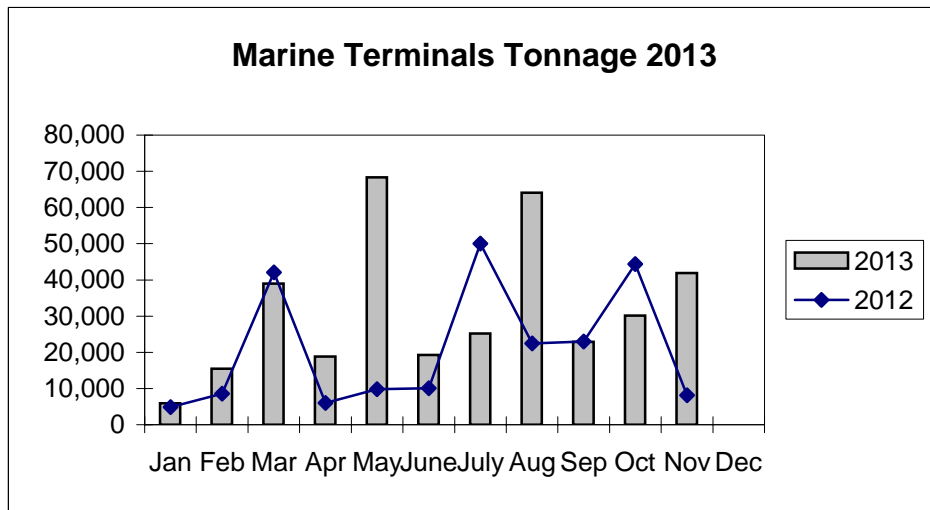
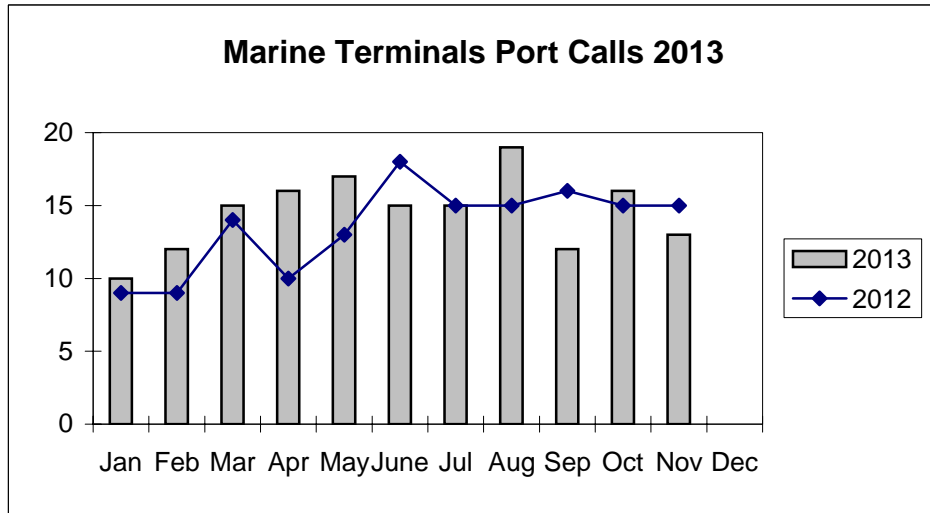


**Port of Everett  
Marine Terminals Statistics Through November 2013**



**Port of Everett**  
**Marine Terminals Statistics Through November 2013**

<b>Port Calls</b>			<b>2013</b>	<b>2012</b>
Port calls YTD			160	149
	ships		104	89
	barges		56	60
Port calls this month		Nov	13	15
	ship		8	9
	barge		5	6
Port calls last month		Oct	16	15
	ship		9	8
	barge		7	7
<b>Tonnage</b>			<b>2013</b>	<b>2012</b>
Short Tons YTD			351,127	229,398
	In (general)		118,804	68,419
	Out		68,853	63,673
	Out (logs)		163,470	97,306
Short tons this month		Nov	41,923	8,118
	In (general)		4,601	5,091
	Out		2,778	3,027
	Out (logs)		34,544	-
Short tons last month		Oct	30,113	44,336
	In (general)		6,402	10,898
	Out		4,580	4,010
	Out (logs)		19,131	29,428
<b>Container Statistics</b>			<b>2013</b>	<b>2012</b>
Number of Units YTD			7,695	7,356
	In		4,694	4,601
	Out		3,001	2,755
Number of Units This Month		Nov	458	442
	In		298	335
	Out		160	107
Number of Units Last Month		Oct	1,070	521
	In		786	240
	Out		284	281

**Port of Everett  
Marine Terminals Statistics Through November 2013**

