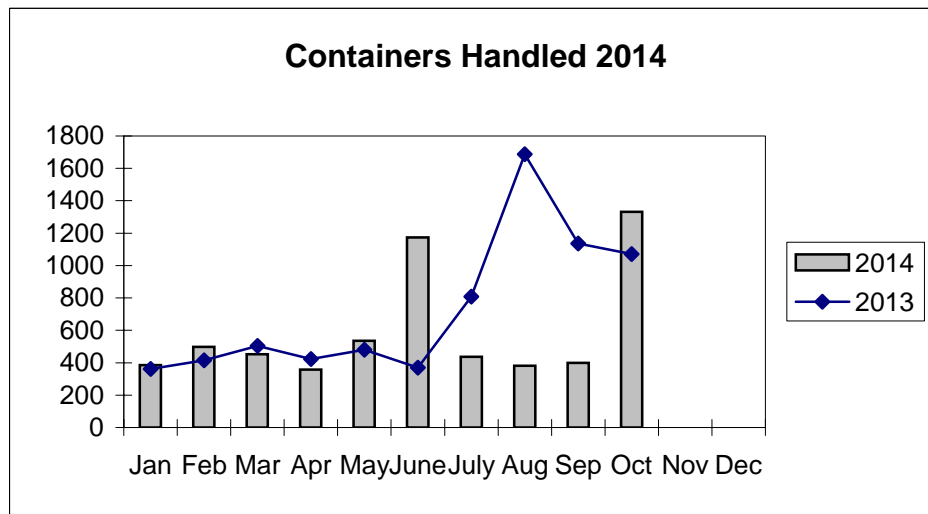
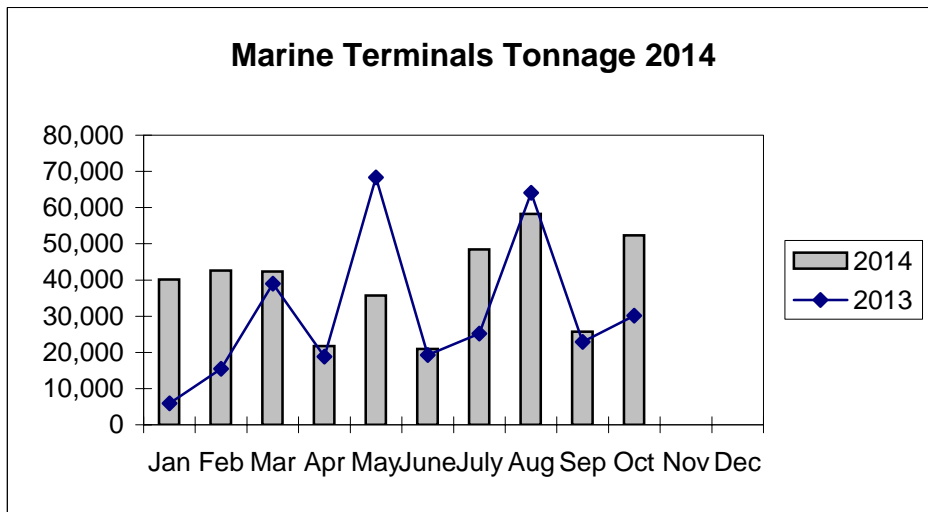
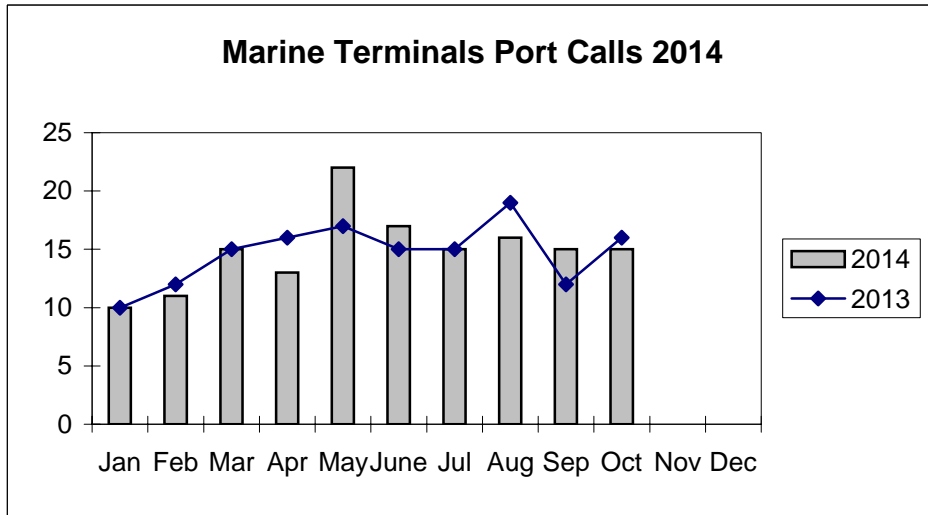


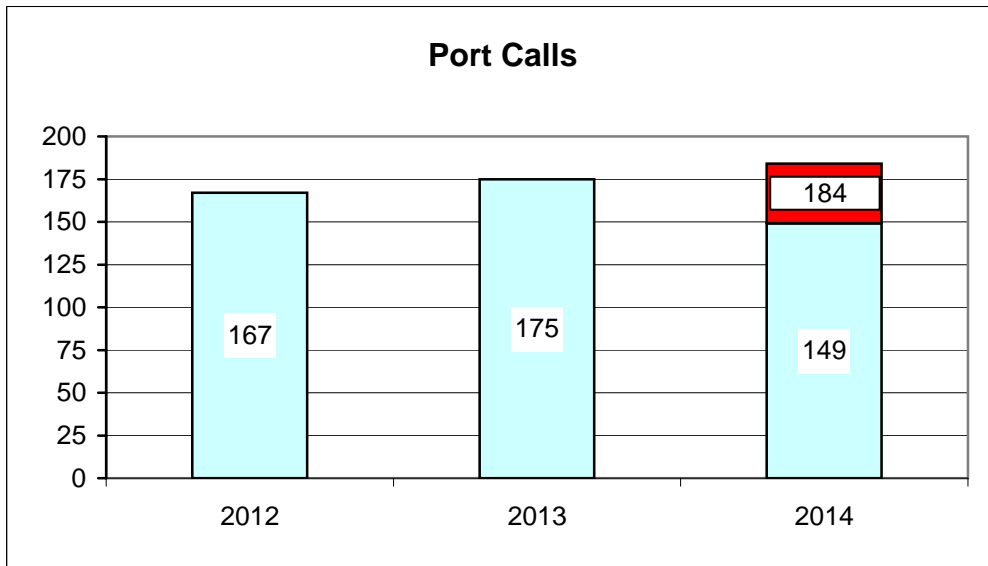
**Port of Everett  
Marine Terminals Statistics Through October 2014**



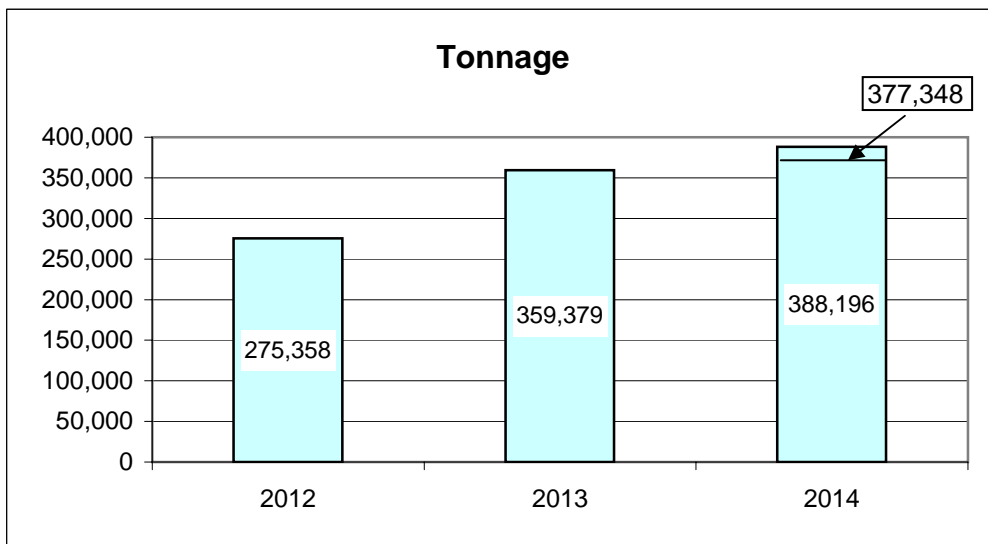
**Port of Everett**  
**Marine Terminals Statistics Through October 2014**

<b>Port Calls</b>			<b>2014</b>	<b>2013</b>
Port calls YTD			149	147
	ships		85	96
	barges		64	51
Port calls this month		Oct	15	16
	ship		10	9
	barge		5	7
Port calls last month		Sep	15	12
	ship		8	8
	barge		7	4
<b>Tonnage</b>			<b>2014</b>	<b>2013</b>
Short Tons YTD			388,196	309,217
	In (general)		132,594	114,216
	In (cement)		35,717	-
	Out (general)		44,389	66,075
	Out (logs)		175,496	128,926
Short tons this month		Oct	52,374	30,127
	In (general)		18,344	6,416
	In (cement)		-	-
	Out (general)		5,425	4,580
	Out (logs)		28,605	19,131
Short tons last month		Sep	25,701	22,855
	In (general)		21,949	14,034
	In (cement)		-	-
	Out (general)		3,752	8,821
	Out (logs)		-	-
<b>Container Statistics</b>			<b>2014</b>	<b>2013</b>
Number of Units YTD			5,951	7,254
	In		3,622	4,413
	Out		2,329	2,841
Number of Units This Month		Oct	1,331	1,070
	In		918	786
	Out		413	284
Number of Units Last Month		Sep	399	1,136
	In		244	696
	Out		155	440

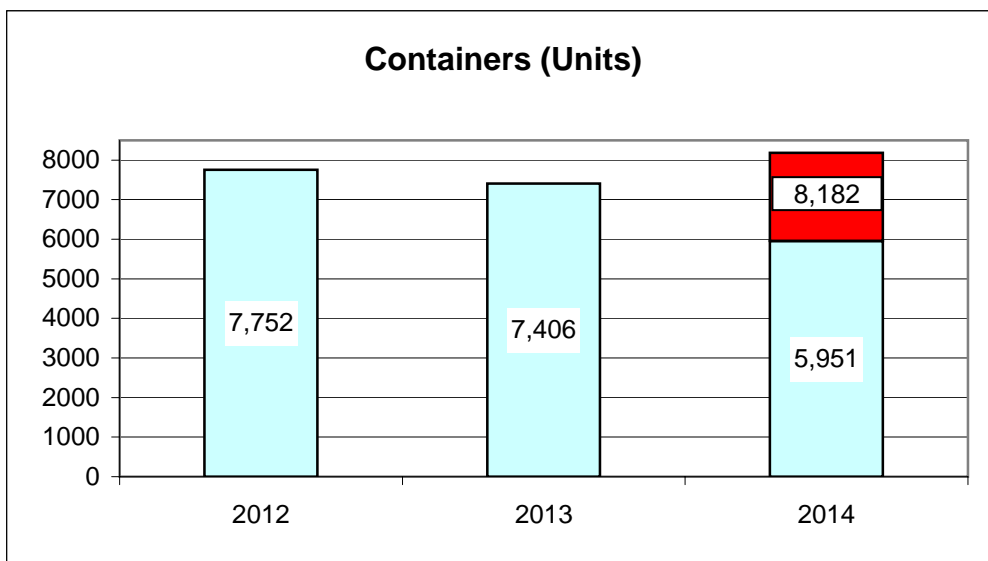
**Port of Everett  
Marine Terminals Statistics Through October 2014**



81%



103%



73%