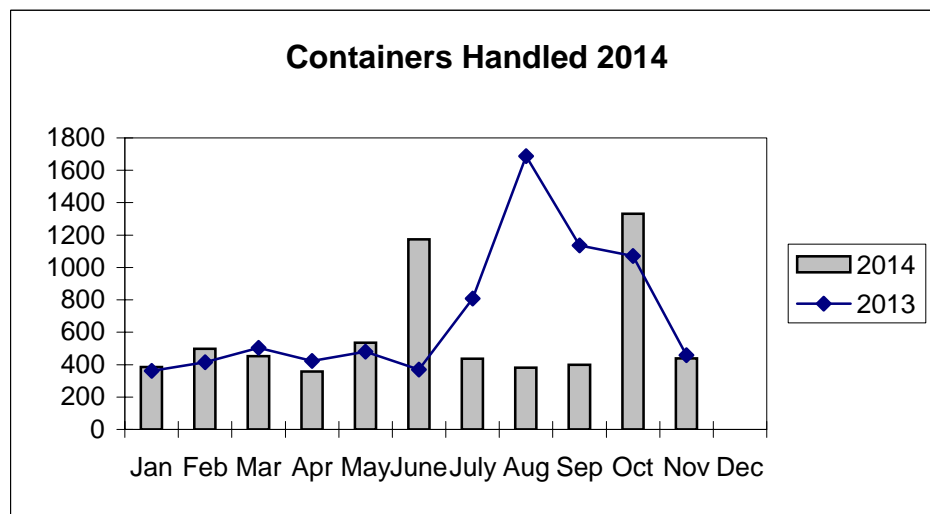
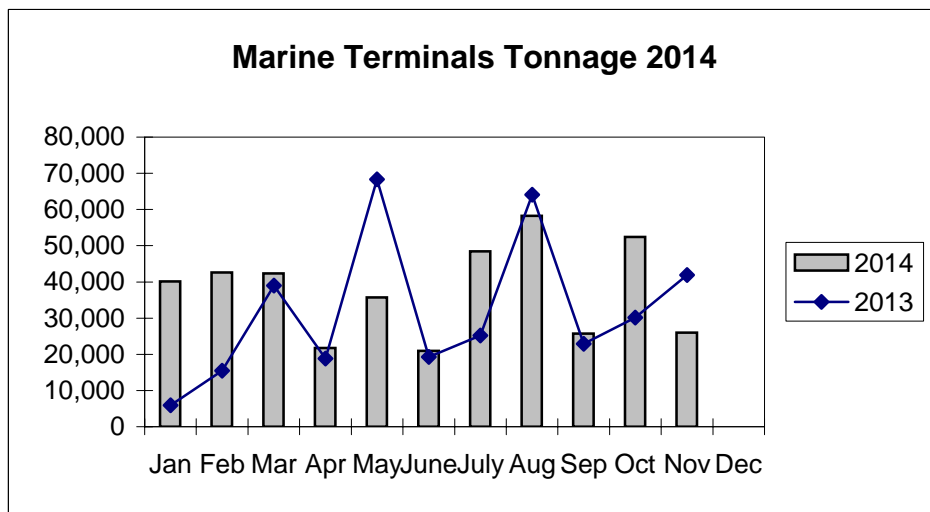
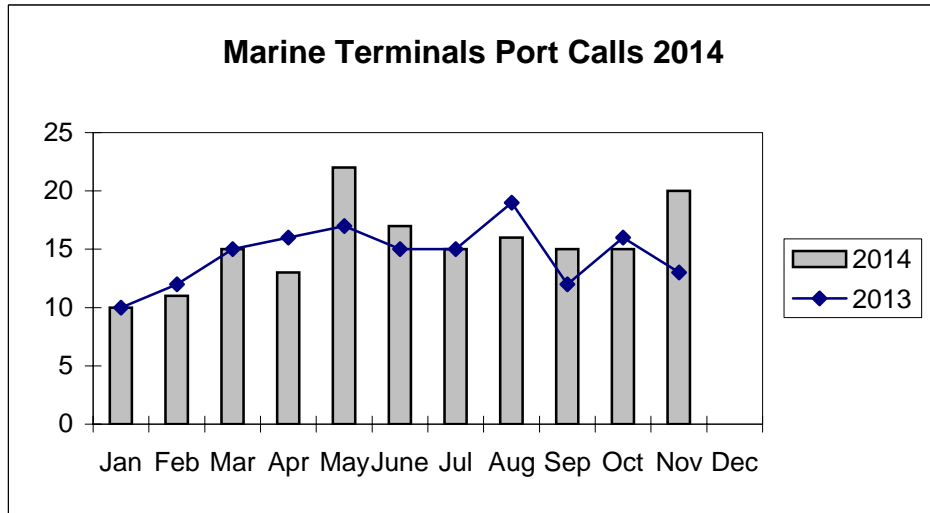


**Port of Everett  
Marine Terminals Statistics Through November 2014**



**Port of Everett  
Marine Terminals Statistics Through November 2014**

<b>Port Calls</b>			<b>2014</b>	<b>2013</b>
Port calls YTD			169	160
	ships		94	104
	barges		75	56
Port calls this month		Nov	20	13
	ship		9	8
	barge		11	5
Port calls last month		Oct	15	16
	ship		10	9
	barge		5	7
<b>Tonnage</b>			<b>2014</b>	<b>2013</b>
Short Tons YTD			414,267	350,440
	In (general)		156,278	118,117
	In (cement)		35,717	-
	Out (general)		46,776	68,853
	Out (logs)		175,496	163,470
Short tons this month		Nov	26,032	41,923
	In (general)		23,684	4,601
	In (cement)		-	-
	Out (general)		2,348	2,778
	Out (logs)		-	34,544
Short tons last month		Oct	52,414	30,127
	In (general)		18,344	6,416
	In (cement)		-	-
	Out (general)		5,465	4,580
	Out (logs)		28,605	19,131
<b>Container Statistics</b>			<b>2014</b>	<b>2013</b>
Number of Units YTD			6,390	7,712
	In		3,923	4,711
	Out		2,467	3,001
Number of Units This Month		Nov	439	458
	In		301	298
	Out		138	160
Number of Units Last Month		Oct	1,331	1,070
	In		918	786
	Out		413	284

**Port of Everett  
Marine Terminals Statistics Through November 2014**

