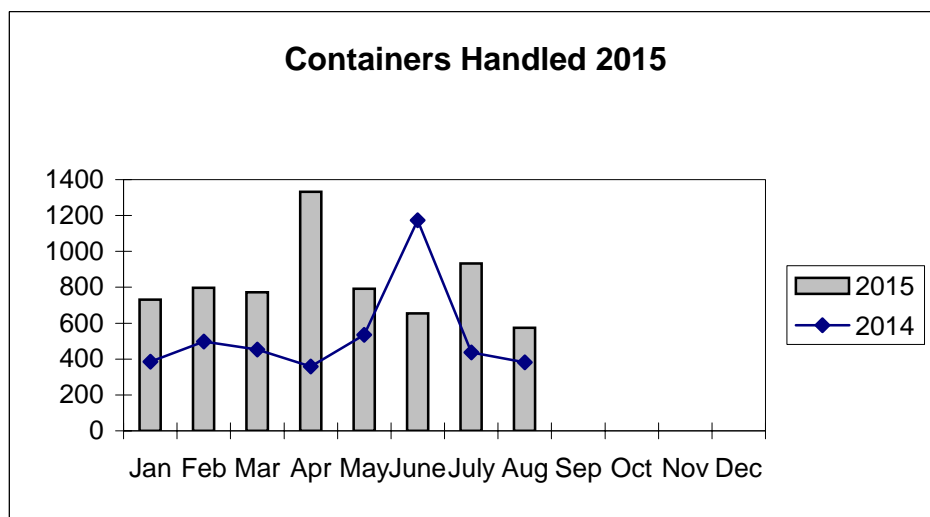
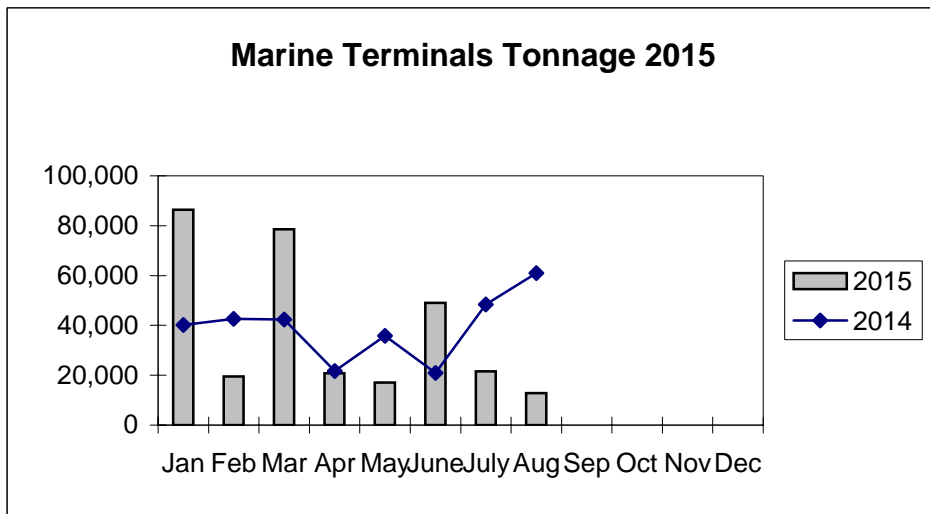
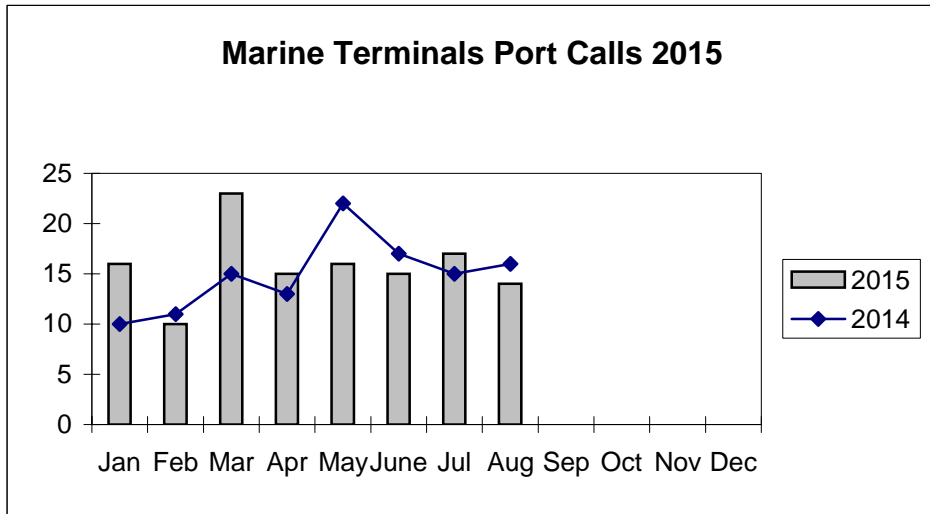


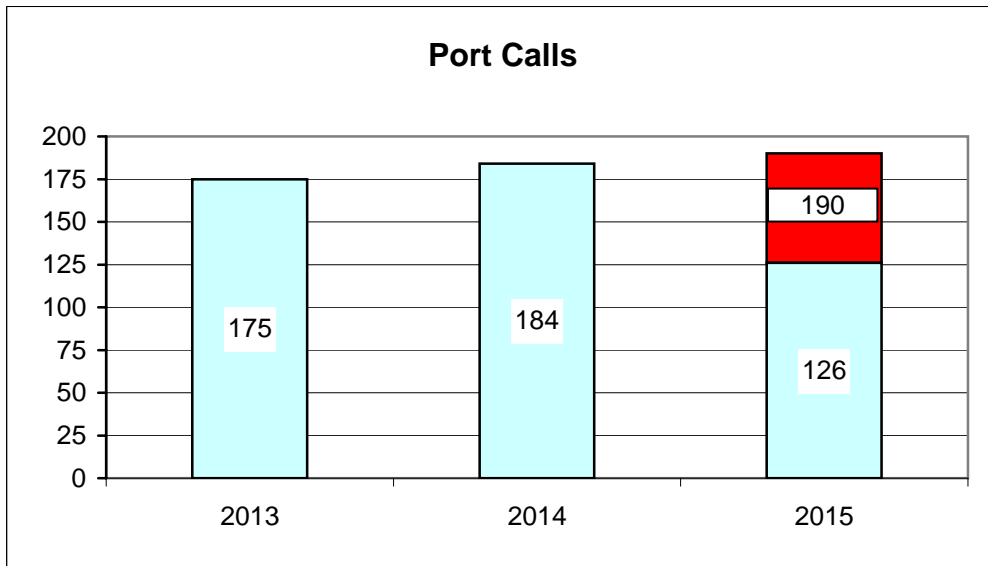
**Port of Everett
Marine Terminals Statistics Through August 2015**



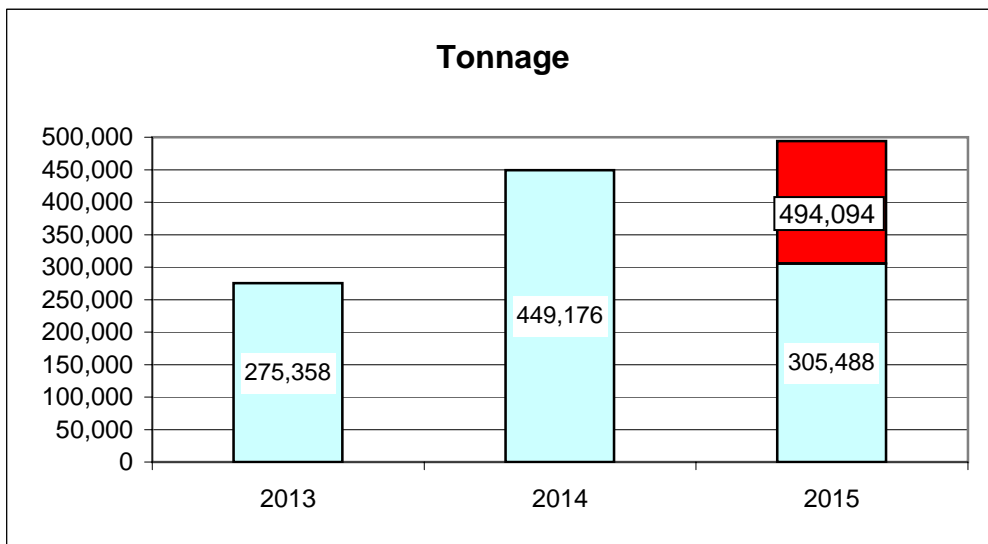
**Port of Everett
Marine Terminals Statistics Through August 2015**

Port Calls		2015	2014
Port calls YTD		126	119
	ships	90	67
	barges	36	52
Port calls this month	Aug	14	16
	ship	6	9
	barge	8	7
Port calls last month	July	17	15
	ship	13	11
	barge	4	4
Tonnage		2015	2014
Short Tons YTD		305,488	310,121
	In (general)	137,406	92,301
	In (cement)	-	35,717
	Out (general)	60,886	35,211
	Out (logs)	107,196	146,892
Short tons This Month	Aug	12,822	58,248
	In (general)	8,292	19,774
	In (cement)	-	35,717
	Out (general)	4,530	2,757
	Out (logs)	-	-
Short tons Last Month	July	21,505	48,426
	In (general)	11,643	17,260
	In (cement)	-	-
	Out (general)	9,862	3,303
	Out (logs)	-	27,863
Container Statistics		2015	2014
Number of Units YTD		6,588	4,221
	In	4,080	2,460
	Out	2,508	1,761
Number of Units This Month	Aug	574	382
	In	399	259
	Out	175	123
Number of Units Last Month	July	936	437
	In	357	315
	Out	579	122

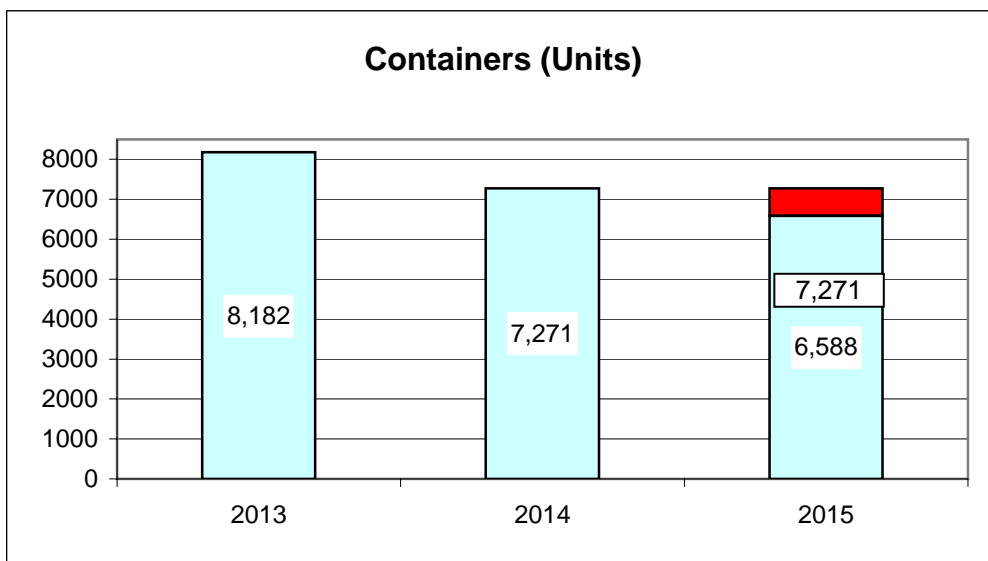
**Port of Everett
Marine Terminals Statistics Through August 2015**



66%



62%



91%