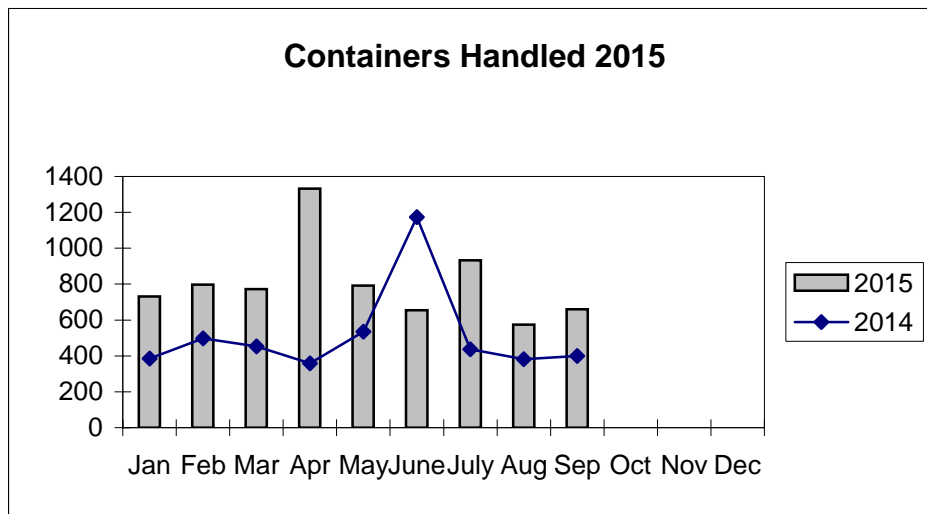
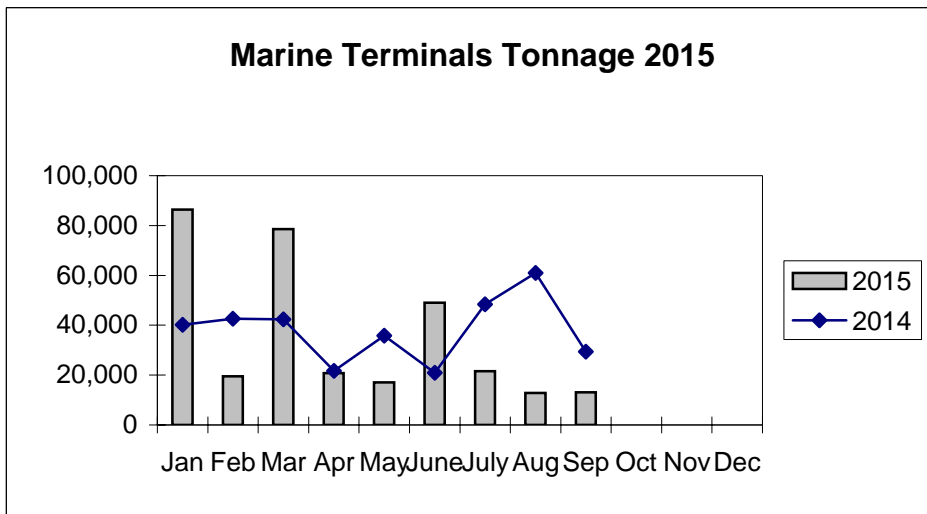
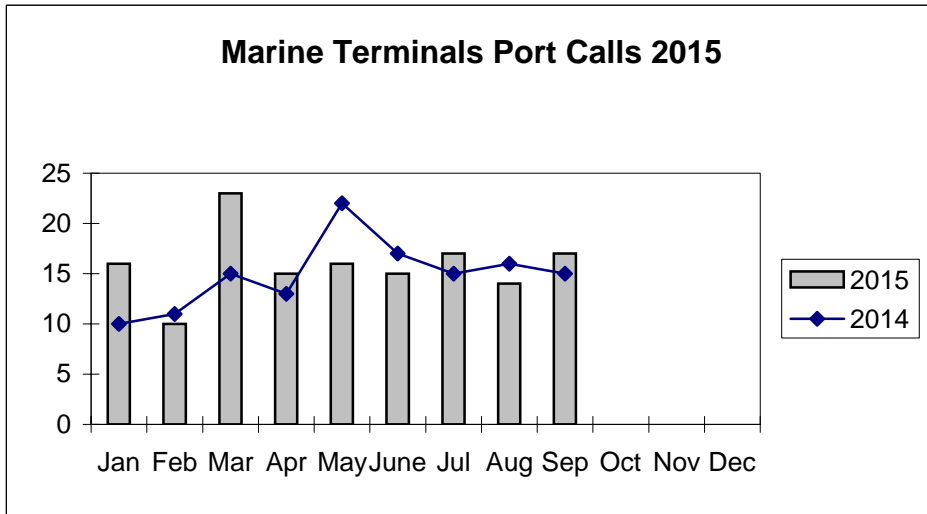


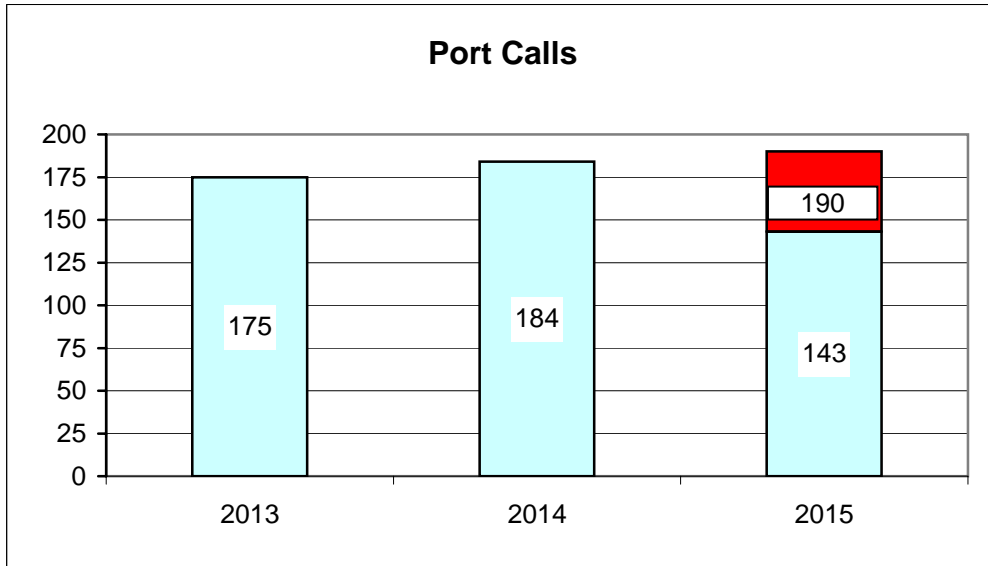
**Port of Everett  
Marine Terminals Statistics Through September 2015**



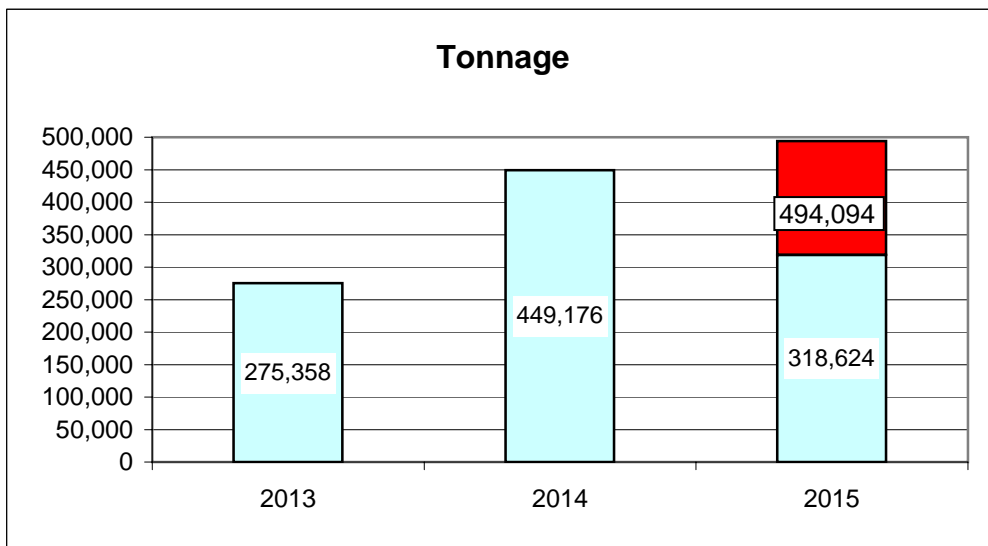
**Port of Everett  
Marine Terminals Statistics Through September 2015**

<b>Port Calls</b>		<b>2015</b>	<b>2014</b>
Port calls YTD		143	134
	ships	101	75
	barges	42	59
Port calls this month	Sep	17	15
	ship	11	8
	barge	6	7
Port calls last month	Aug	14	16
	ship	6	9
	barge	8	7
<b>Tonnage</b>		<b>2015</b>	<b>2014</b>
Short Tons YTD		318,624	335,822
	In (general)	144,144	114,250
	In (cement)	-	35,717
	Out (general)	67,284	38,963
	Out (logs)	107,196	146,892
Short tons this month	Sep	13,136	25,701
	In (general)	6,738	21,949
	In (cement)	-	-
	Out (general)	6,398	3,752
	Out (logs)	-	-
Short tons last month	Aug	12,822	58,248
	In (general)	8,292	19,774
	In (cement)	-	35,717
	Out (general)	4,530	2,757
	Out (logs)	-	-
<b>Container Statistics</b>		<b>2015</b>	<b>2014</b>
Number of Units YTD		7,247	4,620
	In	4,543	2,704
	Out	2,704	1,916
Number of Units This Month	Sep	659	399
	In	463	244
	Out	196	155
Number of Units Last Month	Aug	574	382
	In	399	259
	Out	175	123

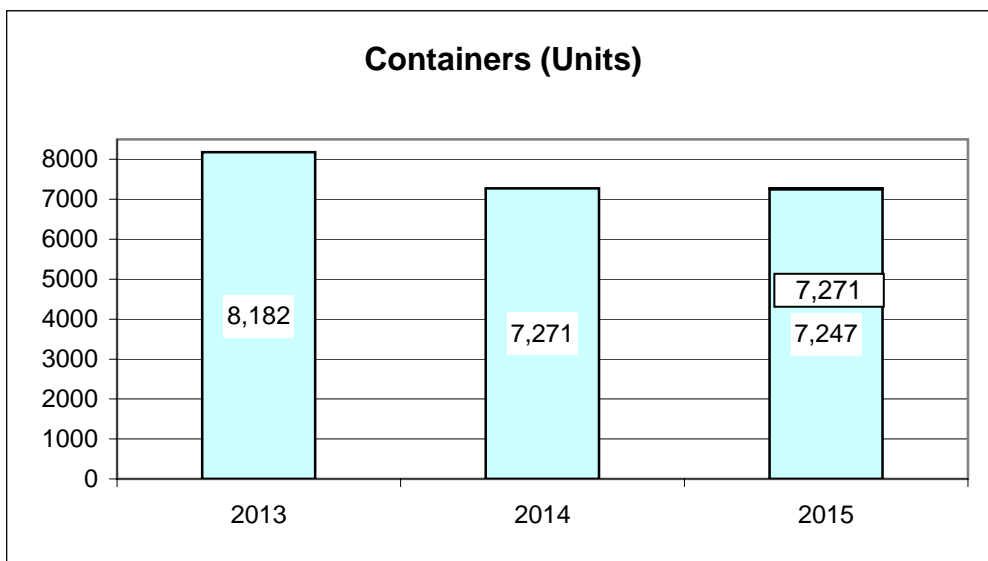
**Port of Everett  
Marine Terminals Statistics Through September 2015**



75%



64%



100%