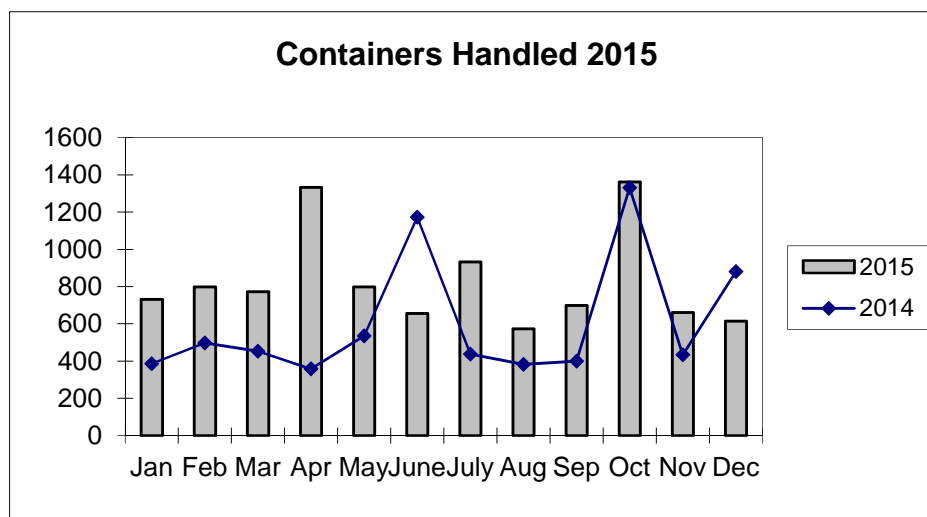
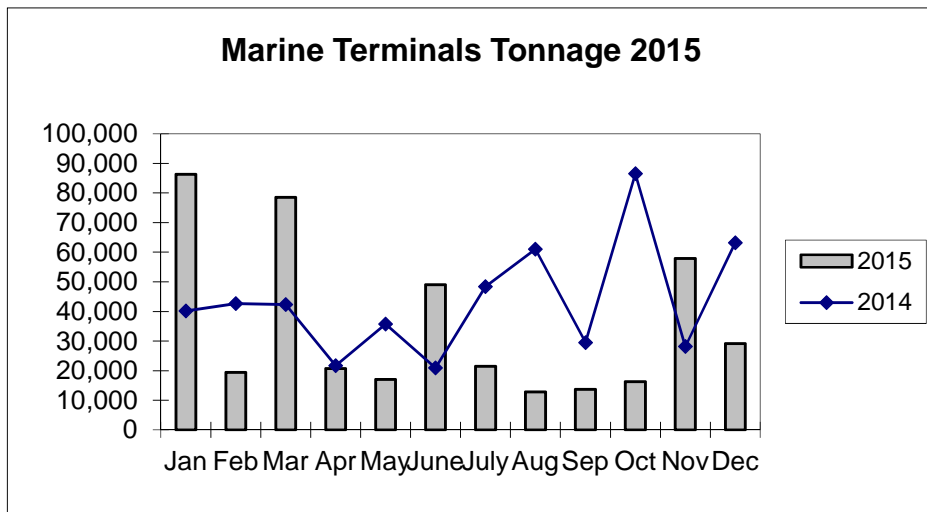
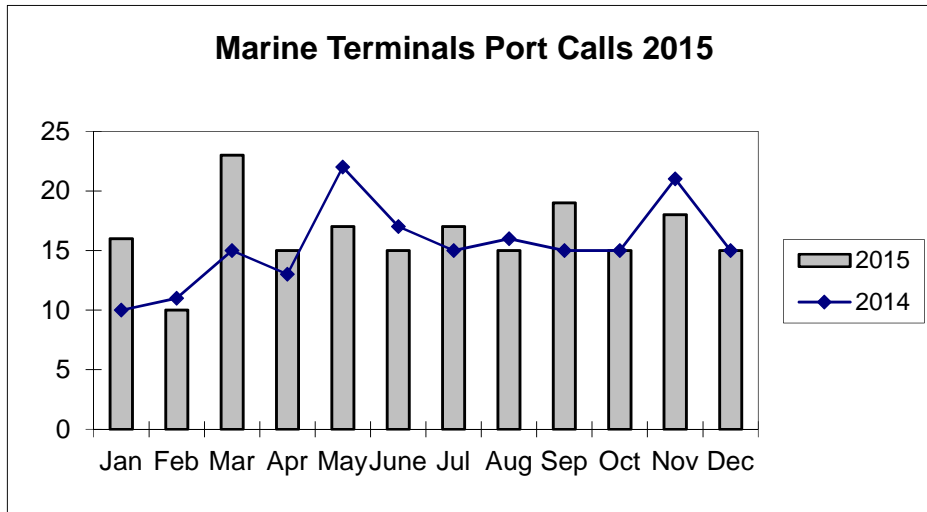


**Port of Everett  
Marine Terminals Statistics Through December 2015**



**Port of Everett  
Marine Terminals Statistics Through December 2015**

<b>Port Calls</b>		<b>2015</b>	<b>2014</b>
Port calls YTD		195	185
	ships	133	105
	barges	62	80
Port calls this month	Dec	15	15
	ship	8	11
	barge	7	4
Port calls last month	Nov	16	21
	ship	10	9
	barge	6	12
<b>Tonnage</b>		<b>2015</b>	<b>2014</b>
Short Tons YTD		422,488	449,120
	In (general)	167,230	162,980
	In (cement)	25,721	35,717
	Out (general)	84,546	62,562
	Out (logs)	144,991	187,861
Short tons this month	Dec	29,139	34,908
	In (general)	5,209	6,646
	In (cement)	18,738	-
	Out (general)	5,192	15,897
	Out (logs)	-	12,365
Short tons last month	Nov	57,844	25,980
	In (general)	9,070	23,741
	In (cement)	6,983	-
	Out (general)	3,996	2,239
	Out (logs)	37,795	-
<b>Container Statistics</b>		<b>2015</b>	<b>2014</b>
Number of Units YTD		9,929	7,267
	In	6,279	4,223
	Out	3,650	3,044
Number of Units This Month	Dec	614	881
	In	394	296
	Out	220	585
Number of Units Last Month	Nov	624	435
	In	410	305
	Out	214	130

**Port of Everett  
Marine Terminals Statistics Through December 2015**

